



# SEVERN TRENT WATER MAIN REPLACEMENT 2012

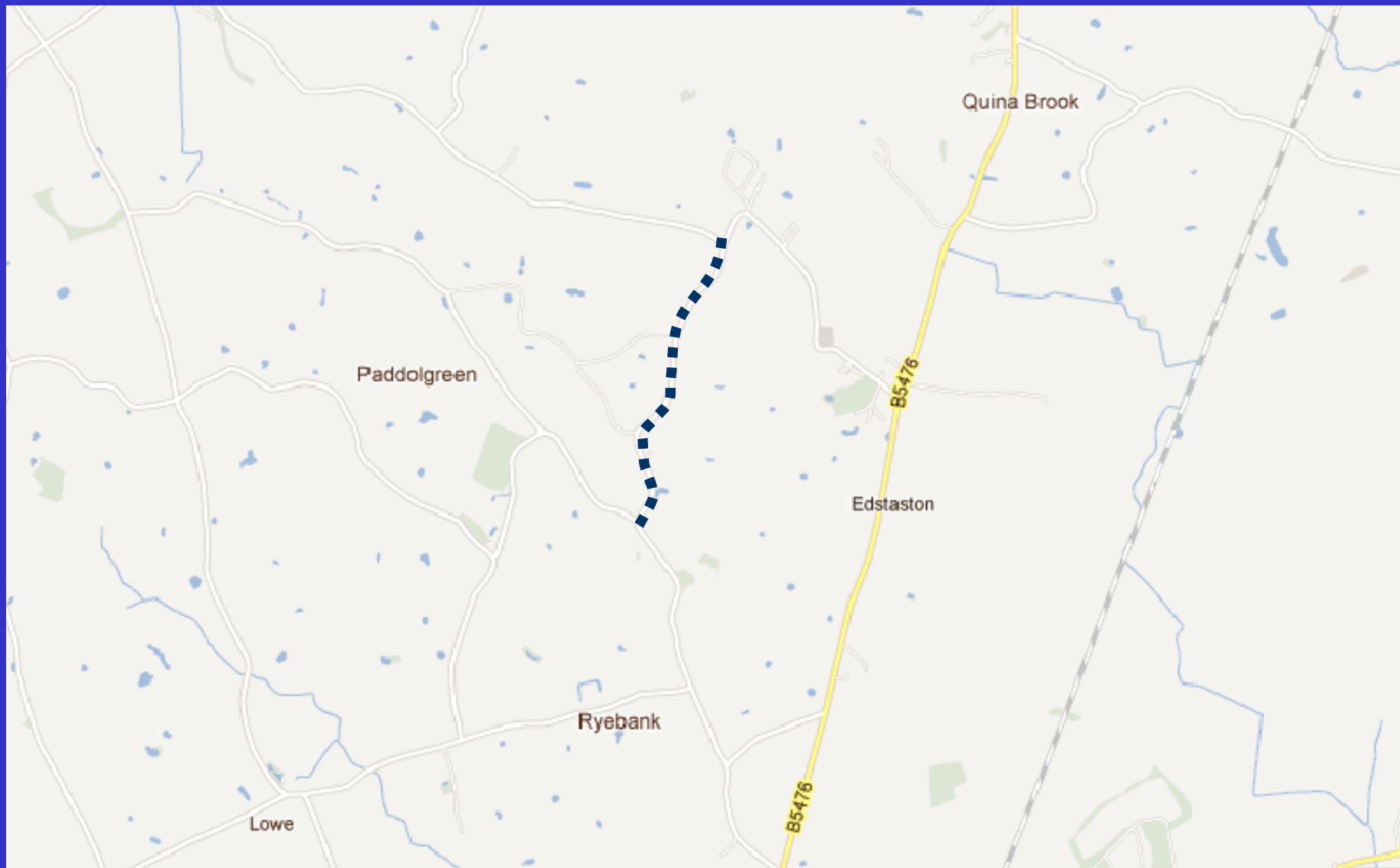
COUNCILLOR JON MURGATROYD



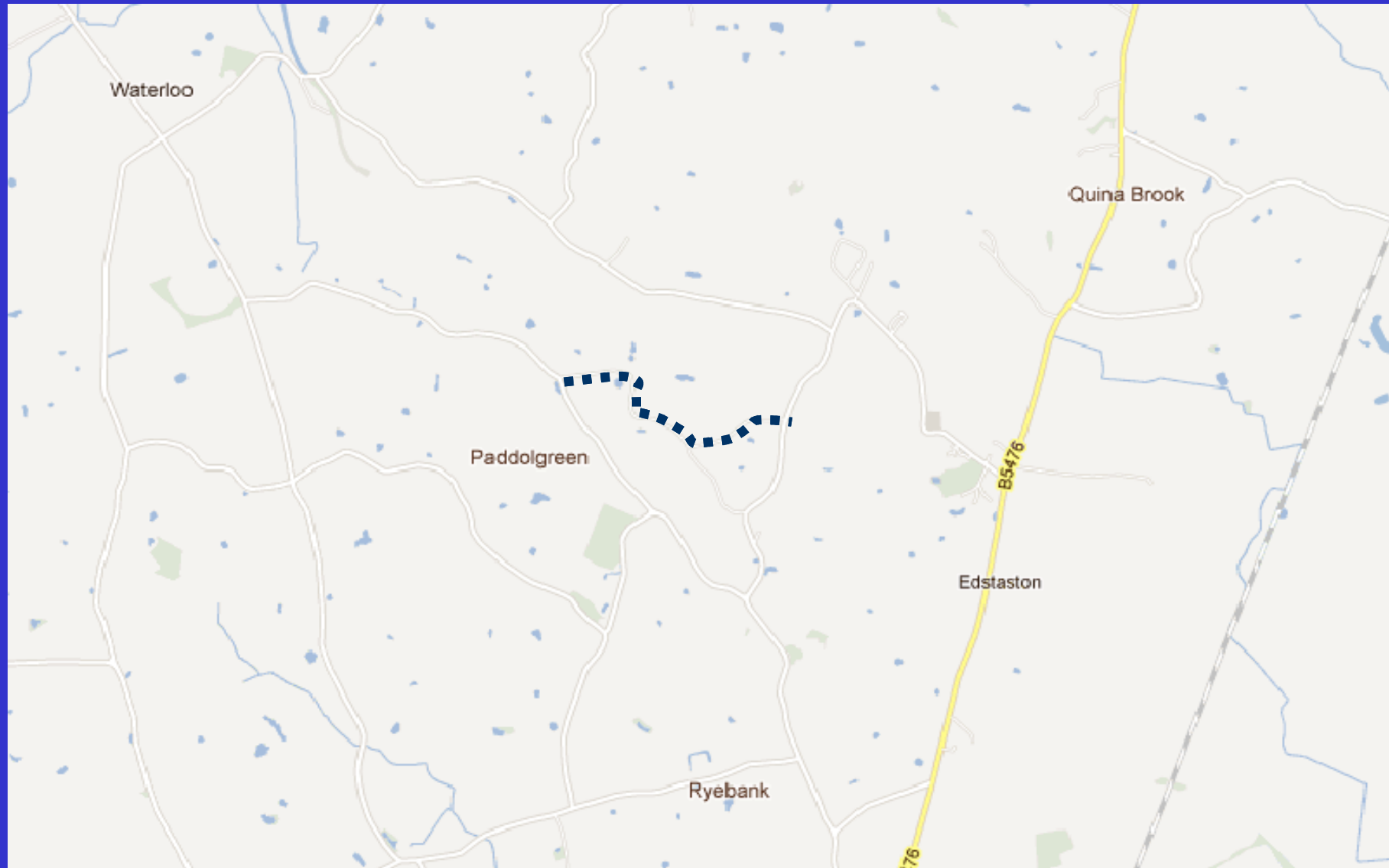
# Overview

- £1.25 million investment in replacing 6.5 miles of water main.
- The work is essential to bring reduce the number of leaks that have occurred from the old pipe network in the area.
- Work being carried out by Severn Trent's contractor, Enterprise.
- Duration of works expected to be between 9 and 12 months.
- In most cases 48hrs notice will be provided of any disruption to water supply.
- To facilitate the works some disruption to travel may be experienced via road closures or traffic light vehicle management systems.
- The works will involve some excavation, but where possible boring machines and 'pipe inlaying' will be used.
- **The planned works are as follows -**

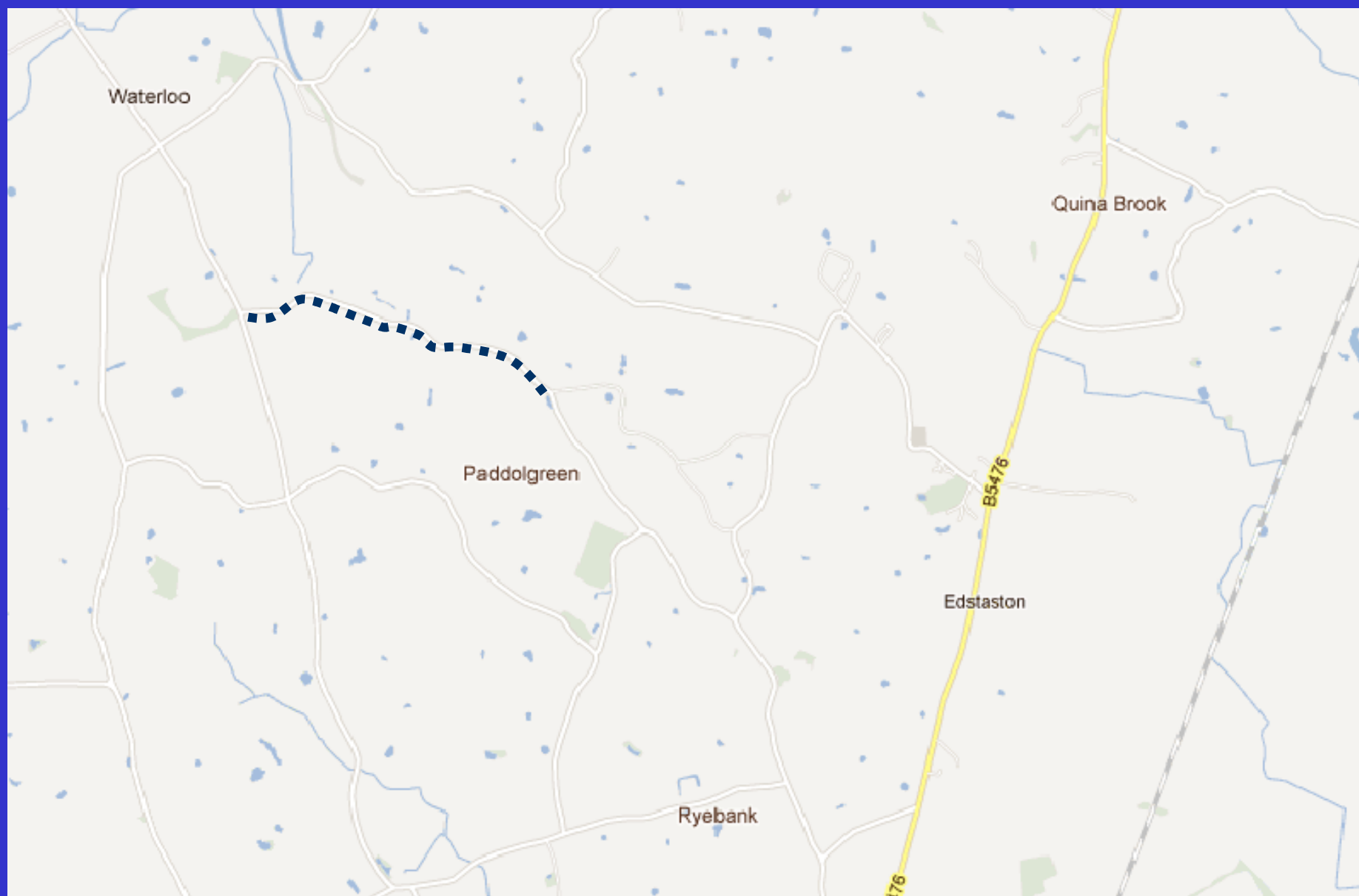
**Road closure from Parkfields junction to junction South of Ryebank Farm.  
To commence Monday 14<sup>th</sup> May 2012 until Tuesday 29<sup>th</sup> May 2012**



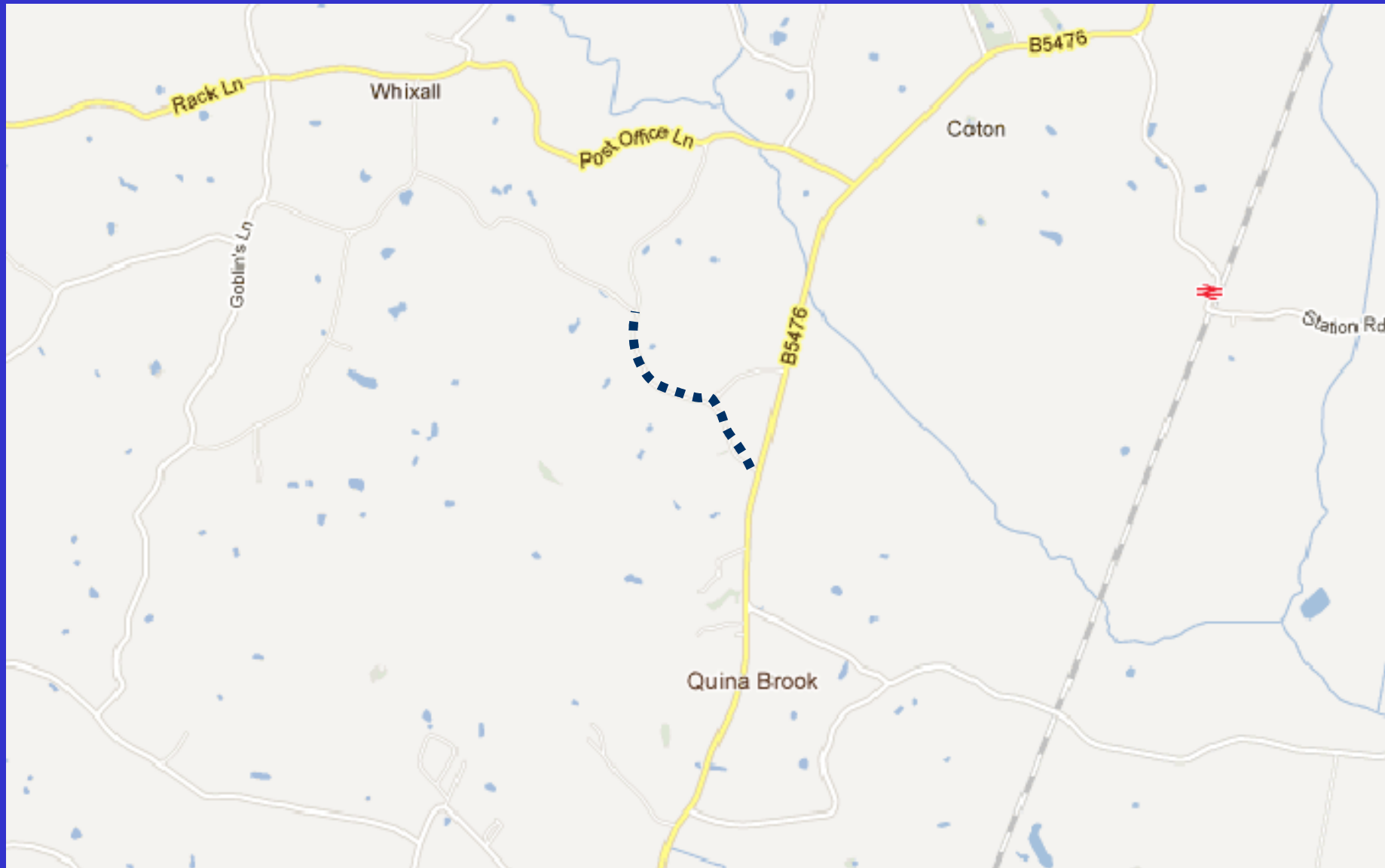
**Road closure from The Firs junction to junction East of Yew Tree Farm.  
To commence on Wednesday 30<sup>th</sup> May 2012 until Wednesday 13<sup>th</sup> June 2012**



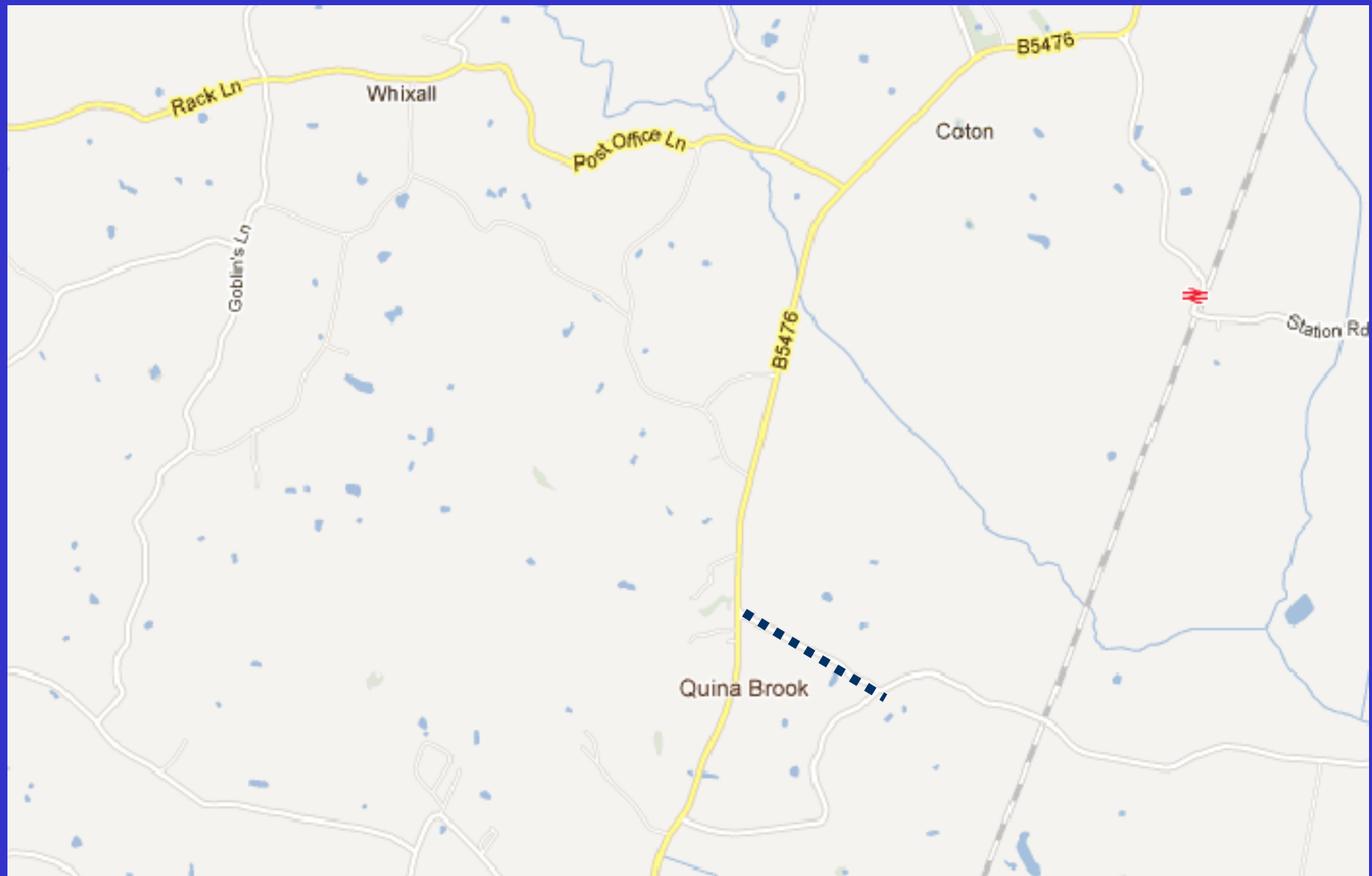
**Road closure from The Firs junction to Poolhead junction.  
To commence on Thursday 14<sup>th</sup> June 2012 until Thursday 5<sup>th</sup> July 2012**



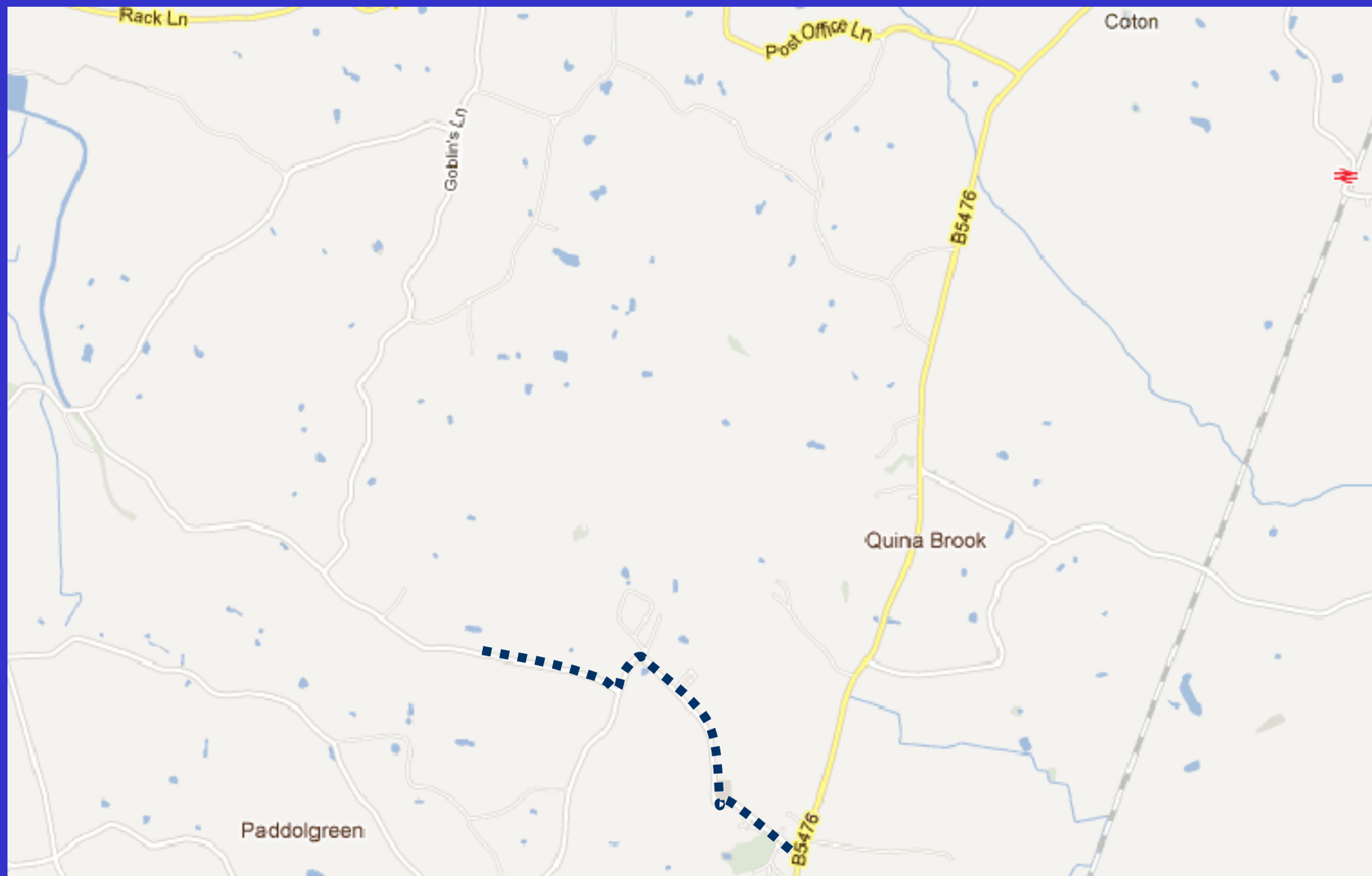
**Road closure Gilberts Lane to B5476.  
To commence on Friday 6<sup>th</sup> July 2012 until Tuesday 17<sup>th</sup> July 2012**



**Road closure B5476 to Silver Birch.**  
**To commence on Wednesday 18<sup>th</sup> July 2012 until Thursday 19<sup>th</sup> July 2012**

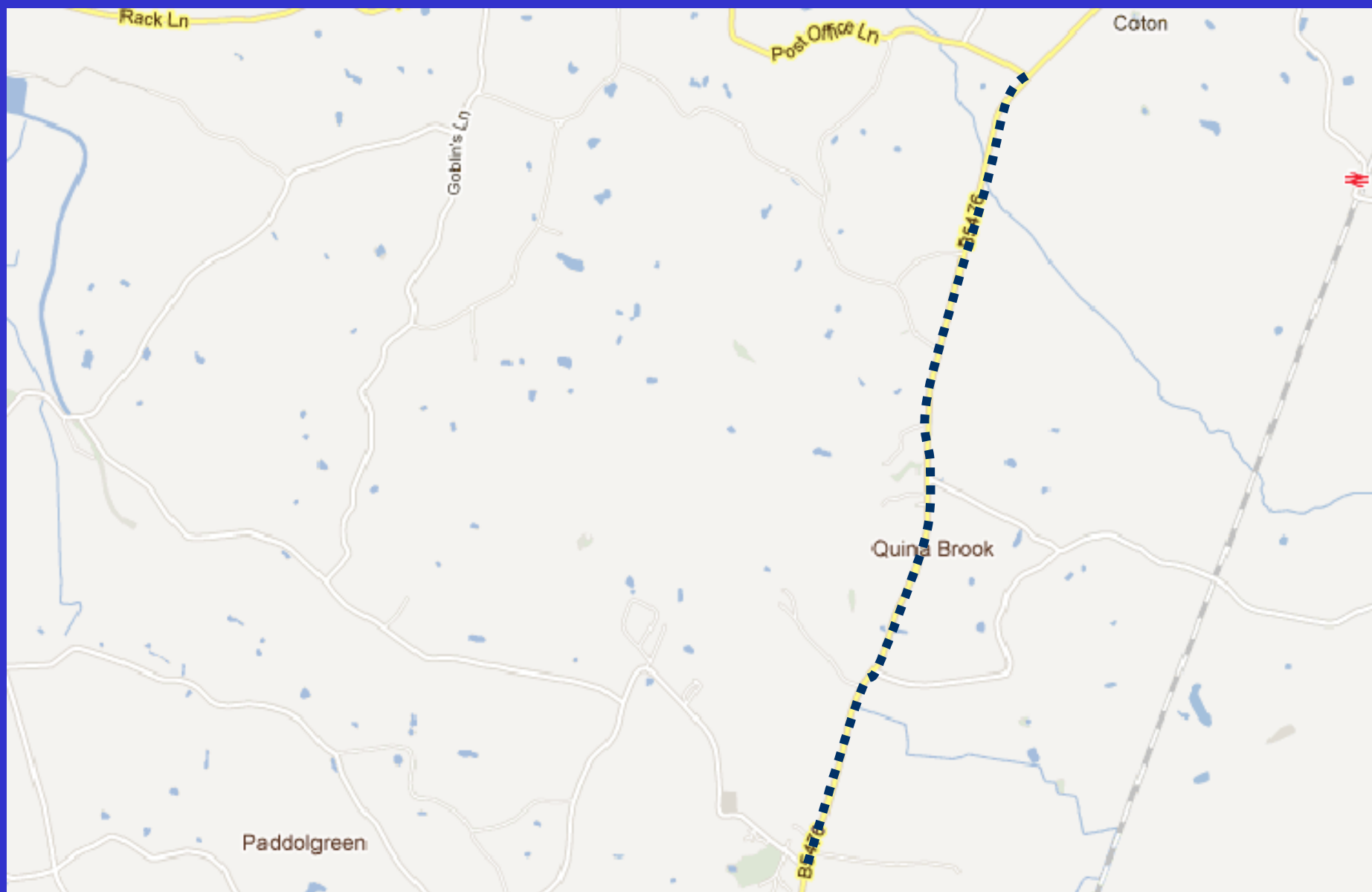


**Under discussion but possibly One way - Oaklands Farm to B5476.  
To commence on Friday 20<sup>th</sup> July 2012 until Monday 13<sup>th</sup> August 2012**

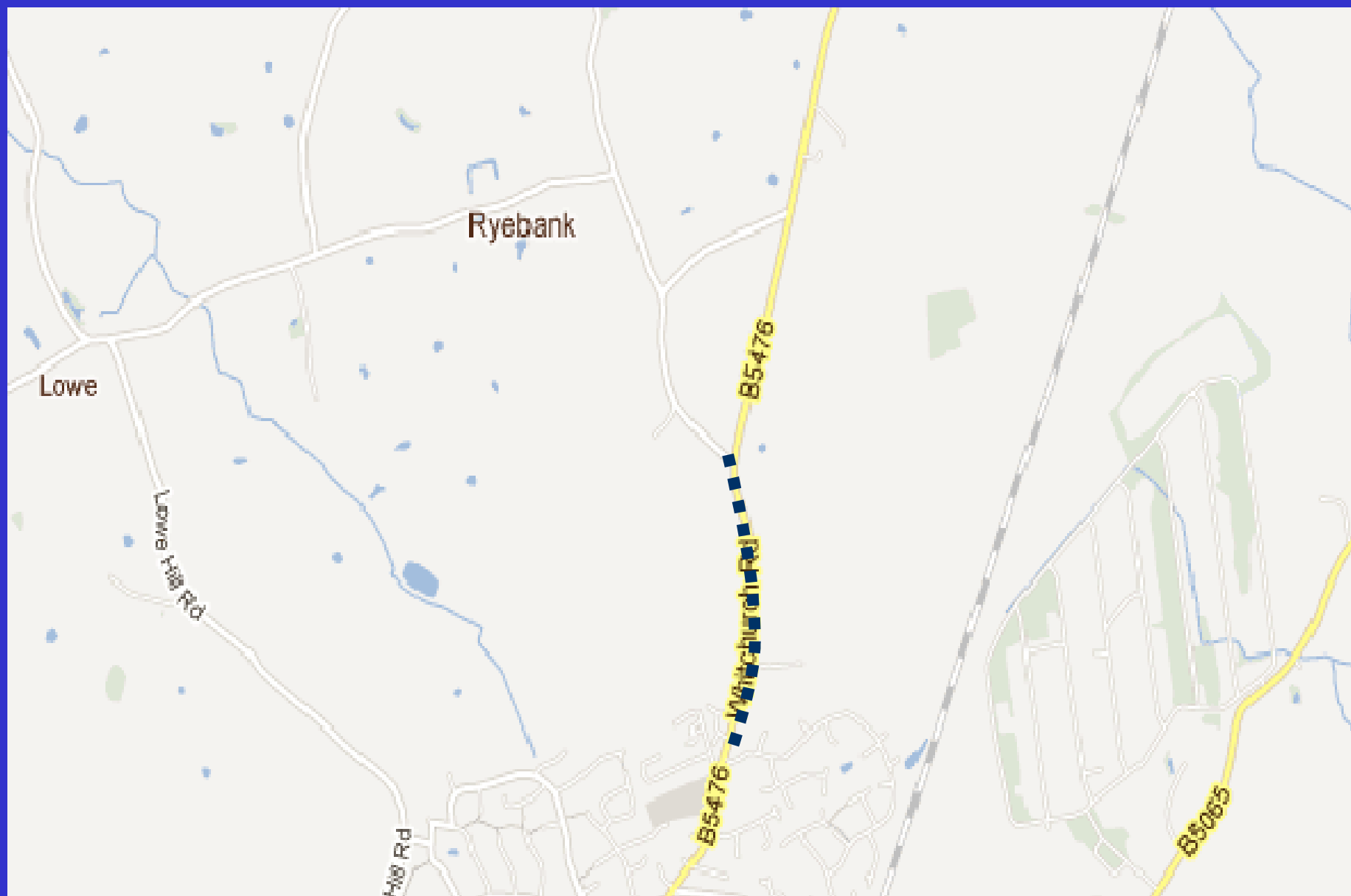


**Traffic Lights on the B5476 - junction with Post Office Lane to the junction of Home Farm, Edstaston.**

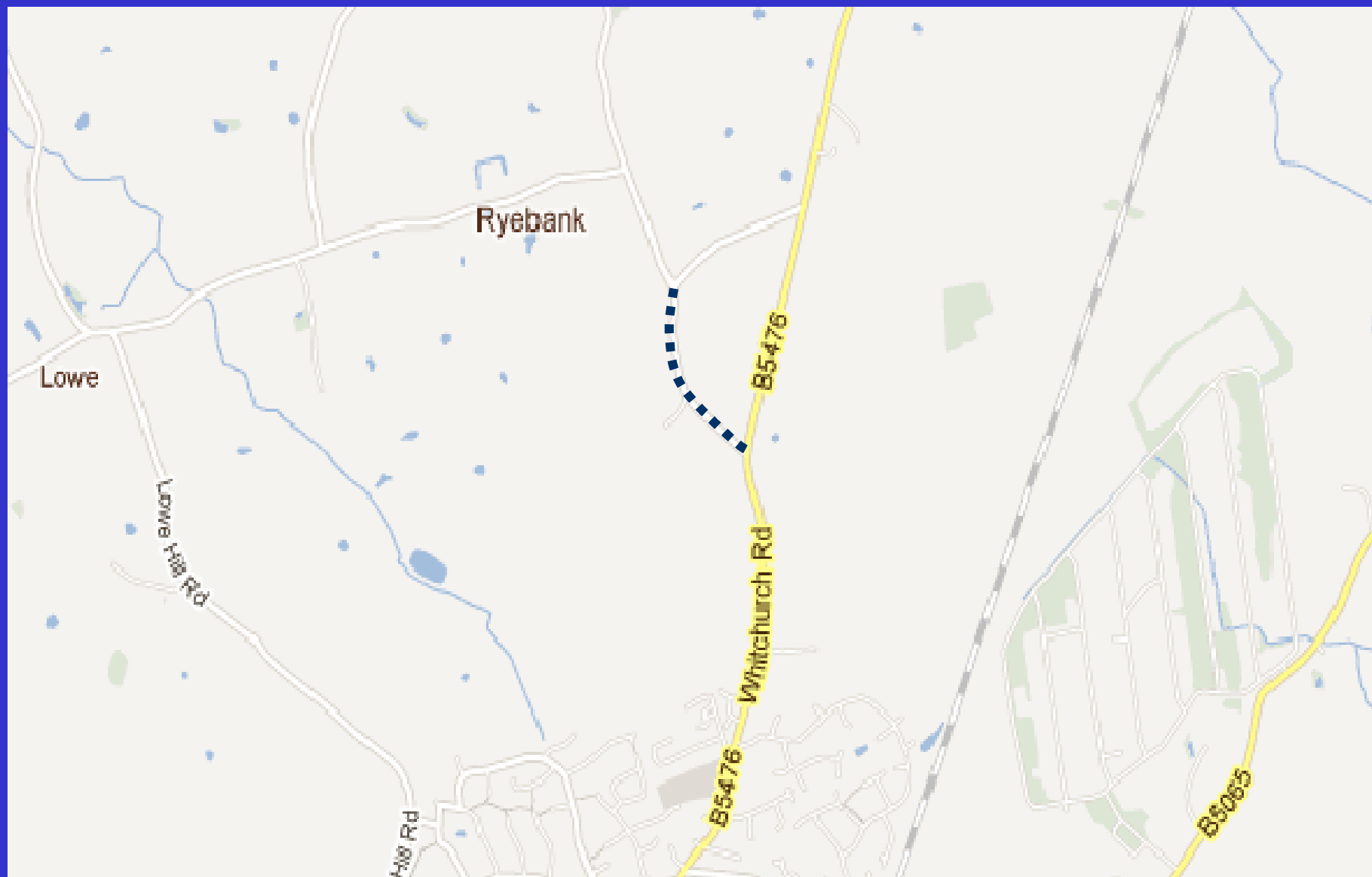
**To commence on Tuesday 14<sup>th</sup> August 2012 until Thursday 20<sup>th</sup> September 2012**

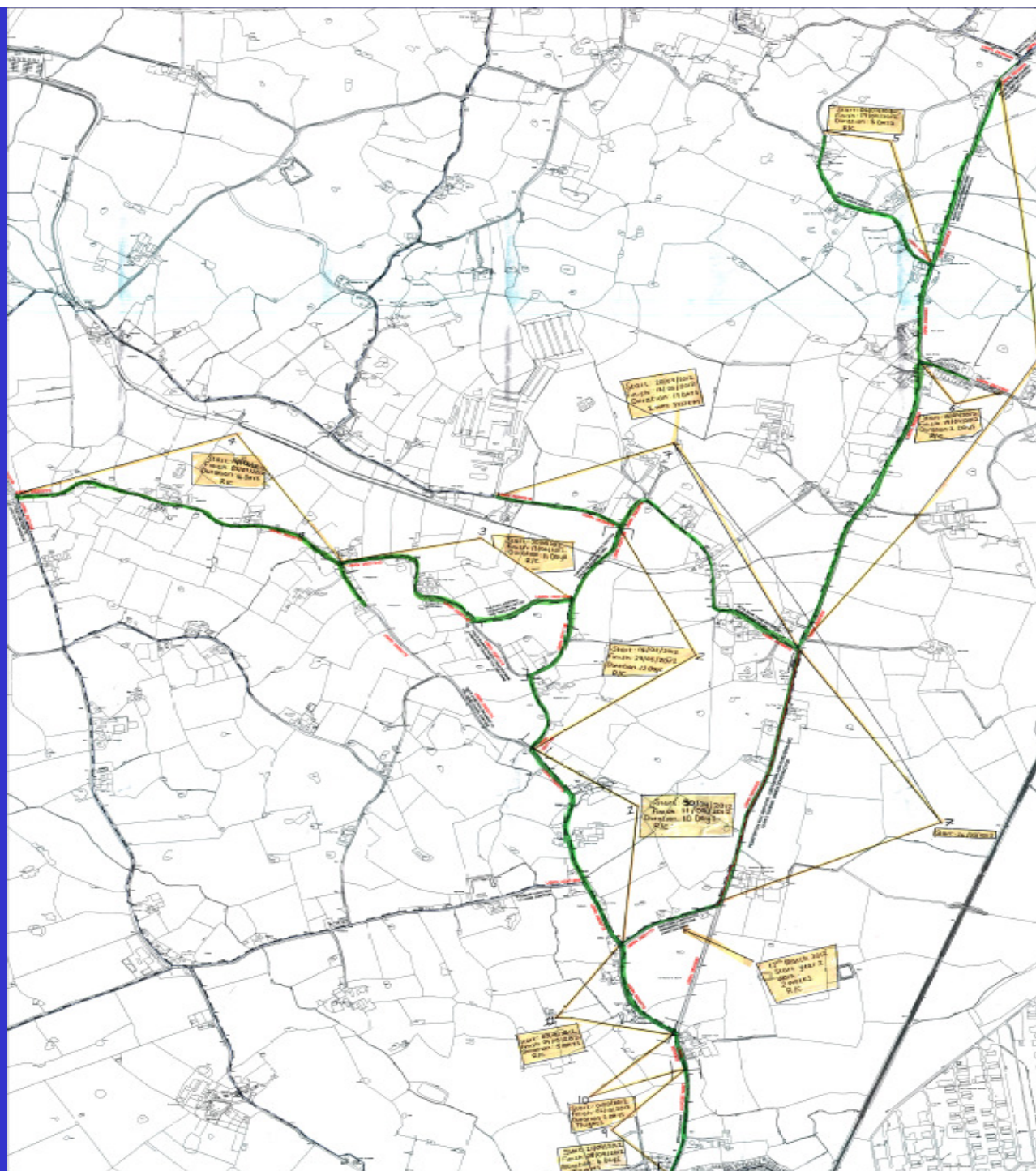


**Traffic Lights on the junction of Bazeley Way to Creamore Farm.  
To commence on Friday 21<sup>st</sup> September 2012 until Tuesday 2<sup>nd</sup> October 2012**



**Road Closure from Creamore Farm to Jessamine Cottage.  
To commence Wednesday 3<sup>rd</sup> October 2012 until Tuesday 9<sup>th</sup> October 2012**





# Further Information can be obtained from:

Stephen Coventry  
Customer Services Water  
Enterprise  
Neptune House  
Nelson Court  
Staffordshire Technology Park  
ST18 0WQ

07841166554 | Mobile  
Stephen.Coventry@enterprise.plc.uk

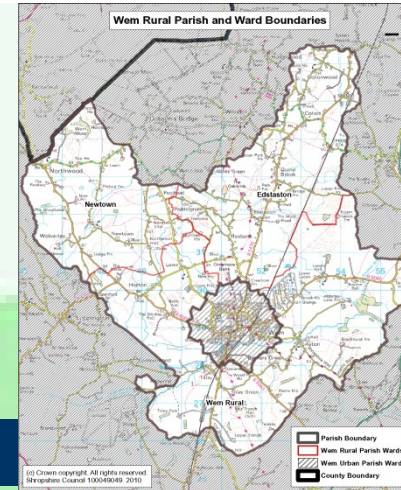


# **“A PARISH COUNCILLOR”**

**COUNCILLOR TIM WILTON-MORGAN**

# Councillor Vacancy

- Edstaston Ward
- To be declared Friday 18 May 2012
- Further information available on Shropshire Council website ([www.shropshire.gov.uk](http://www.shropshire.gov.uk)), Parish Council website ([www.wemrural.org.uk](http://www.wemrural.org.uk)) and notice boards around the parish



# **FUTURE DEVELOPMENT IN WEM RURAL PARISH**

**CLERK CAROLE WARNER**

# Planning Policies

- National Policy
  - National Planning Policy Framework (NPPF)
- Local Plans
  - Impact of Unitary Council 2009
  - Shropshire Plan (Local Development Framework)

# Shropshire Local Plan 2010 - 2026



---

- Collection of Planning Policy Documents including:
  - Core Strategy
  - Site Allocation and Management of Development (SAMDev)
- Benefits to the Community
  - Community Infrastructure Levy (CIL)
  - Affordable Housing Contribution

# Site Allocations and Management of Development DPD (SAMDev)

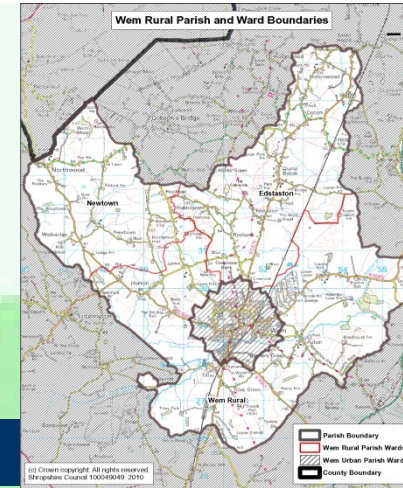
---

- Consultation Stage 2
  - Preferred Options
  - Ends noon 20 July
  - On line response
- Planned adoption mid 2014

# Site Allocations

- Principles
  - Market Towns, Community Hubs, Community Clusters and Countryside
  - Numbers / levels of development
  - Preferred sites where appropriate
- Parish Council Involvement
  - Nominate a settlement or area
  - Level of Development
    - By size
    - By year
    - By Parish Plan
    - By ..... what ever!

# Development in the Parish



- Existing North Shropshire District Council Policy

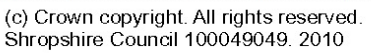
- Northwood
- Newtown

- Proposed Policy

- All “Countryside”
- Barn Conversions
- Single Plot Exception Sites
- Agricultural Workers Homes

No NEW Open Market Housing

© 2015 Pearson Education, Inc. or its affiliate(s). All rights reserved.





# **QUESTIONS AND DISCUSSIONS**



Thank you  
and  
Goodnight!