



Wem Rural Parish Council

ANNUAL PARISH MEETING

15th March 2011

7:30pm

AGENDA

1. Introduction (including signing of Minutes of APM 18 May 2010)
2. Annual Report of the Parish Council
3. Parish Plan Update
4. Wem and Shawbury Local Joint Committee
5. Community Policing
6. “A Shropshire Councillor”
7. Public Questions and Discussion

ANNUAL REPORT OF THE PARISH COUNCIL

**Cllr Richard Powell
(Chairman - Wem Rural Parish Council)**

PARISH PLAN UPDATE

Cllr Jon Murgatroyd
(Chairman - Wem Rural Parish Plan Steering Group)

Wem Rural Community Plan

What?
Why?
How?
When?



What?

“A Parish Plan is a comprehensive document, which sets out a shared vision of how the community wants the Parish to develop over the next 5 – 10 years”

It is our voice.....

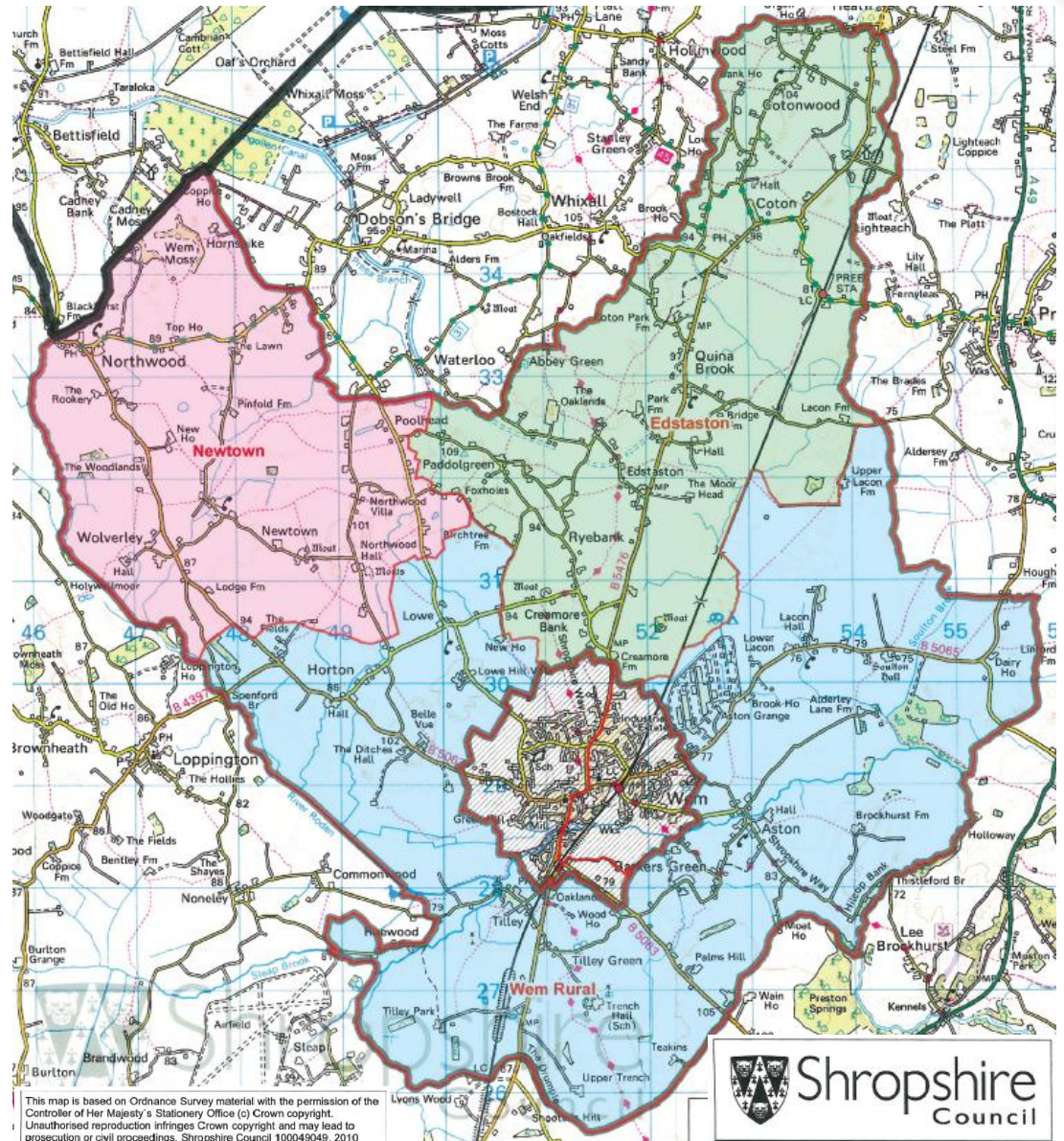
documented evidence of how we want our community to grow and mature

The aims of the Wem Rural Community Plan Steering Group are to –

1. To obtain detailed views and opinions from parishioners regarding a wide range of issues in our community;
2. Supply our Parish Council and local government departments with qualified feedback to enable them to prioritise their limited resources most effectively;
3. Stimulate and enhance Community spirit.

Why?

- An estimated population of 1456
 - 362 children(25%)
 - 1094 adults
 - of which 13% 65+
- Containing approximately 630 residential properties
- And approx 130 Registered businesses



How?

1. Parish Consultation
2. Rural Toolkit
3. Detailed Questionnaire
4. Parishioners Feedback



When?

End April / May 2011–

Under 16's On-line questionnaire to be completed by local schools;

20th - 23rd May 2011 –

Hand delivery of the primary Adult questionnaire to all households in the parish;

19th June 2011 -

Questionnaires completed on-line or returned to drop off areas or posted back by this date!;

August 2011 -

Questionnaire analysis begins;

December 2011 -

Draft Parish (Community) Plan available for review;

March 2012 -

Completed Plan and resulting actions presented to Wem Rural Parish Council.

How you can help.....

Spread the word with your neighbours and in the local community

Take the time (20 to 25 mins max) to complete the questionnaire

Return the questionnaire as soon as possible!

Help with the distribution and collection of the questionnaire



WEM AND SHAWBURY LOCAL JOINT COMMITTEE

Cllr Pauline Dee

(Shropshire Councillor for Wem, Wem Rural and Whixall)

COMMUNITY POLICING

**PC Lesley Mitchell
and**

PC Antony Jones

(Local Police Officers covering Wem Rural Parish)

“ A SHROPSHIRE COUNCILLOR”

Cllr Chris Mellings

(Shropshire Councillor for Wem, Wem Rural and Whixall)

PUBLIC QUESTIONS & DISCUSSION

Newtown Ward

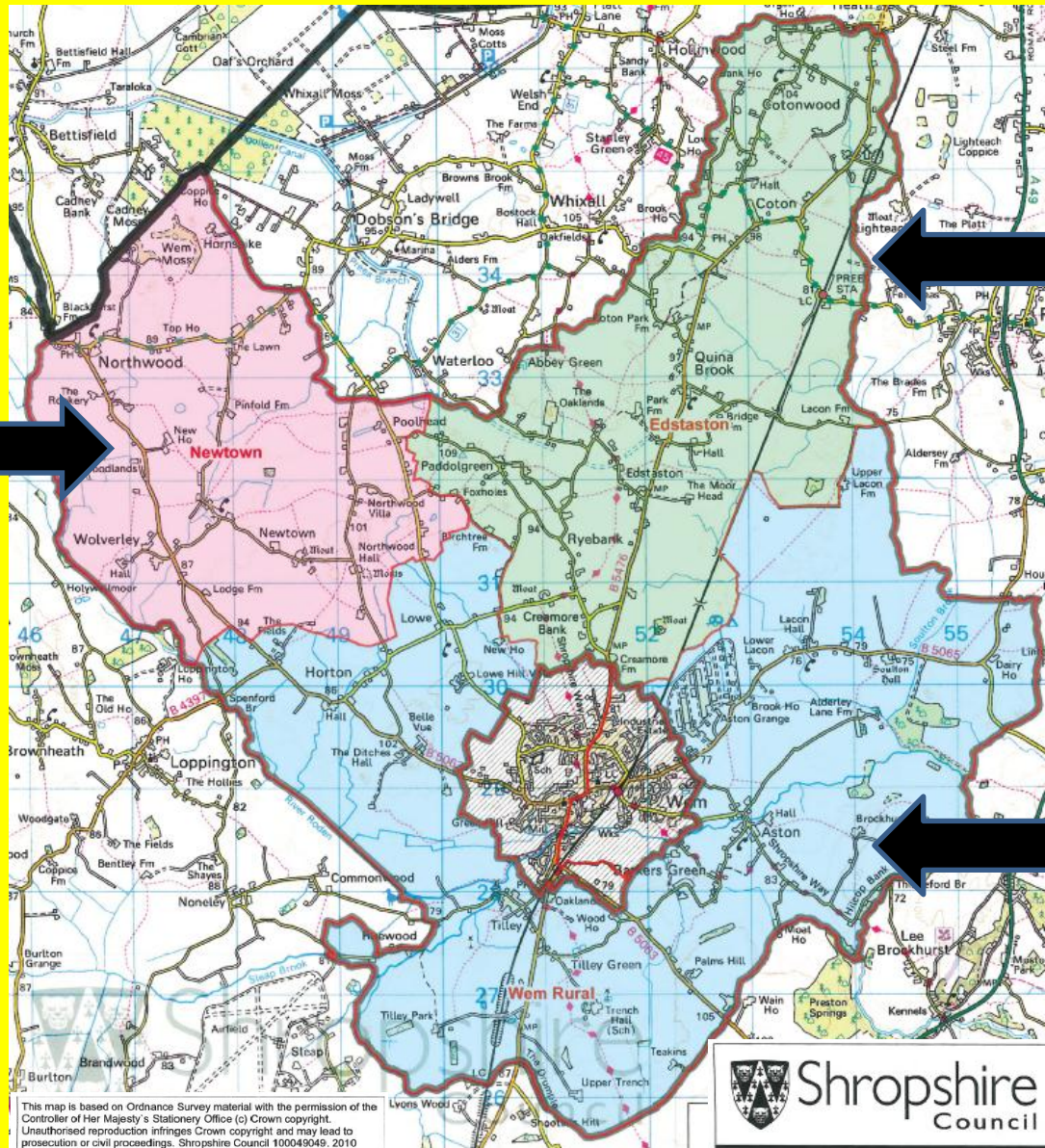
Mark Lockett
Richard Powell

Edstaston Ward

Owen Darlington
Angela Neame
Laura McMahon
Bryan Morgan
Jon Murgatroyd

Wem Ward

Peter Broomhall
Don Edwards
Bev Horsley
Len Staines
Tim Wilton-Morgan





THANK YOU