

connecting Shropshire

# building a broadband future



Faster



Affordable



Reliable



Inclusive

building a broadband future for everyone

- All information is for the use of the Parish Council and is shared in good faith with the sole purpose of full and open engagement
- All projected information remains 'open to change' and should be considered as provisional where delivery has not yet been completed



## Phase 1 Summary

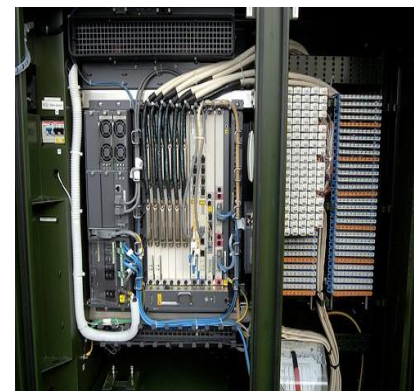
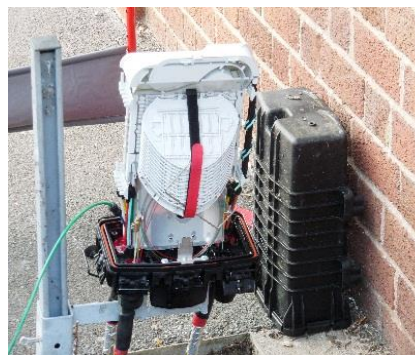
- BDUK 90% SFBB – 2015/16
  - Central Gvt strategic target resulted in £540m
  - State Aid governs approach to reach SFBB
- Contracted March 2013
- Intervention area 72k premises out of 144k
- Projected by end of programme:
  - 87% SFBB (24Mbps+)
  - 93% fibre (2Mbps+)
  - Includes commercial projections
  - All sub 2Mbps in programme area to get a solution
- Circa 350 structures scheduled to be built
- Work in circa 90+ Exchange areas
- 12 Phases - to complete Q3 2016 (winter)
- 50+ staff engaged on programme



building a broadband future for everyone

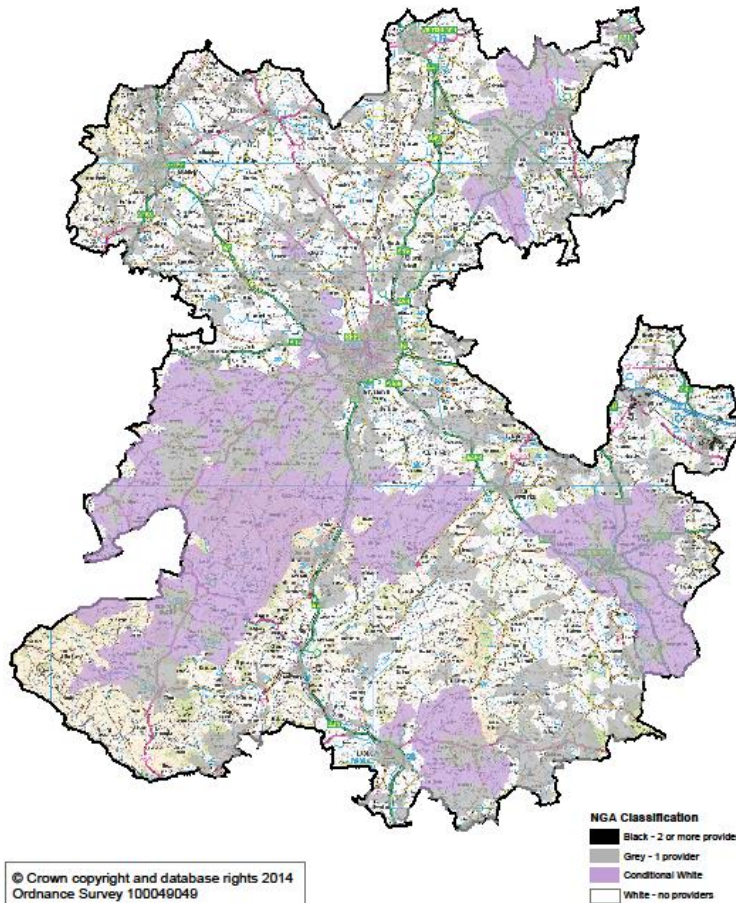
# Phase 1 Summary

- Projections exclude:
  - Reinvestments from savings made
  - Clawback reinvestment – 10 year period
  - Extra £1.4m BDUK monies:
    - Extra 1,054 premises
    - 22 parishes covered.
- @ March 2015:
  - 35k premises
  - 163 Cabinets CRFS
  - Average speeds 50Mbps
  - 35% of pre sub 2Mbps upgraded
  - 86% Superfast speeds



# Public Consultation

NGA Broadband Coverage



Research & Intelligence Team

The Shirehall, Abbey Foregate,  
Shrewsbury, Shropshire, SY2 8ND

Scale : 1:375,000

## NGA Classification

Black	Black - 2 or more providers
Grey	Grey - 1 provider
Conditional White	Conditional White
White	White - no providers

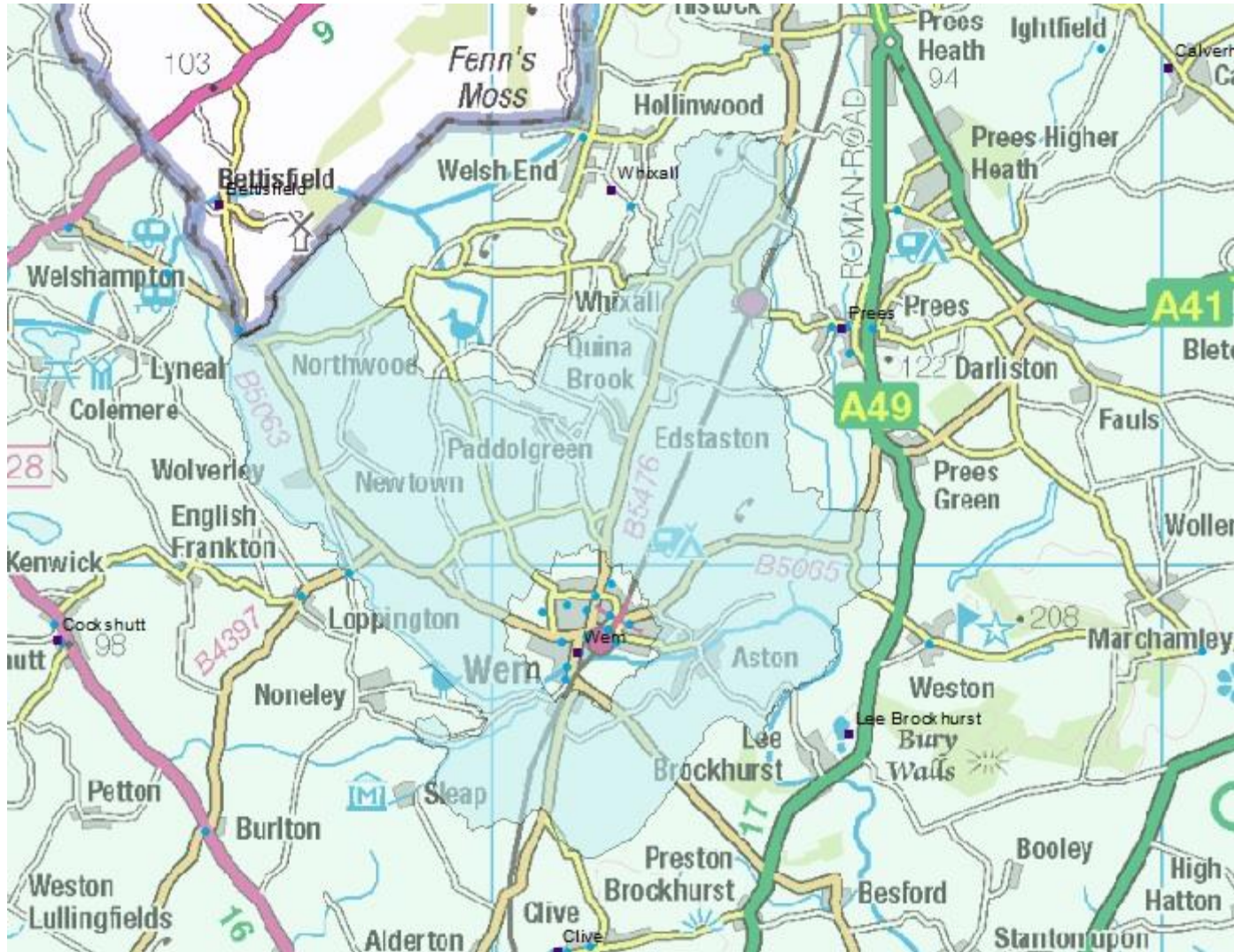
➤ GAPS	28,500 SFBB (<15Mbps)	5,133 BASIC (2Mbps)
➤ INC AT RISK	13,000 “	2,321 “
➤ ITT	15,500 “	2,812 “

building a broadband future for everyone

## Phase 2 Timeline

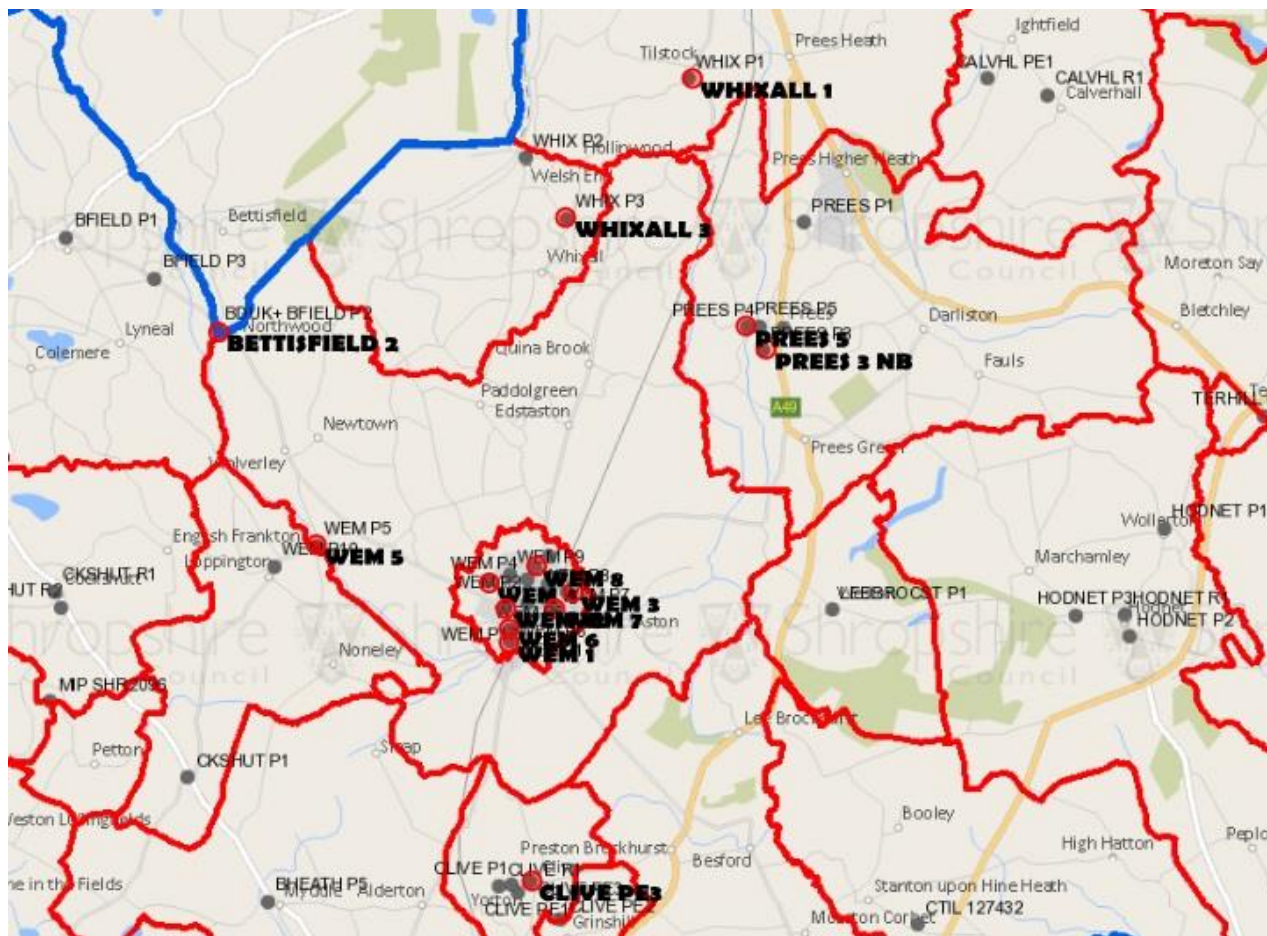
- Issue ITT – 19/12/2014 (£11.38m)
  - Include Business Preferences;
  - Include Community funding;
  - Change Infill
- Projected tender return – Spring 2015
- Other funding announced
  - Feb 2015 – LEP £5.02m
  - June 2015 – EU TBC
- Projected contract – Summer 2015
- Plan local Phase 3 approach – Summer/Autumn 2015
- Finish Phase 1 and commence Phase 2 – Winter 2016

# Wem Rural Parish

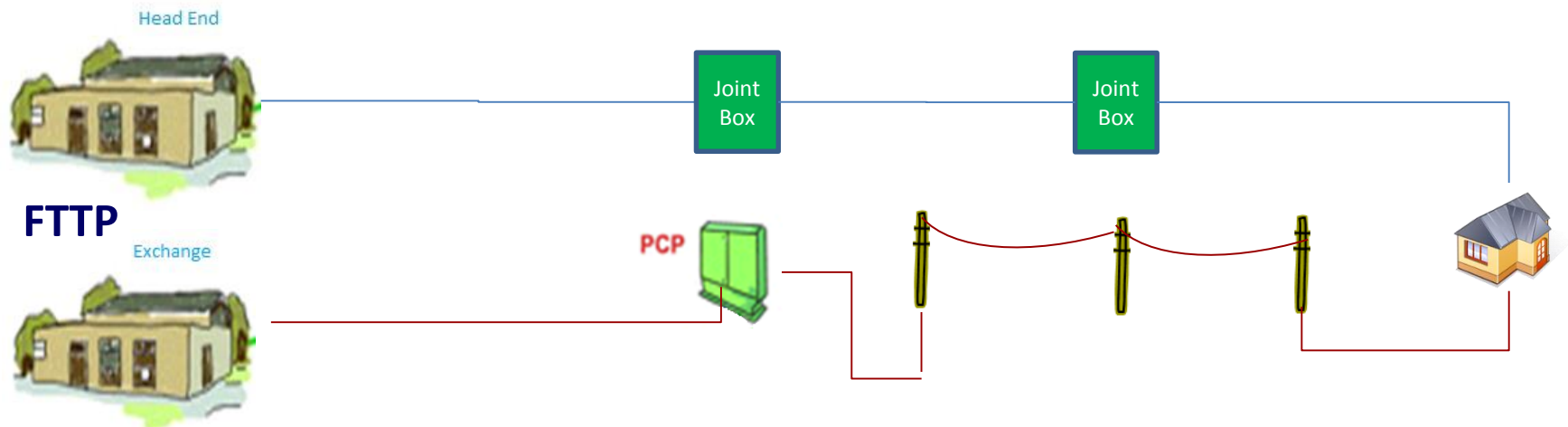
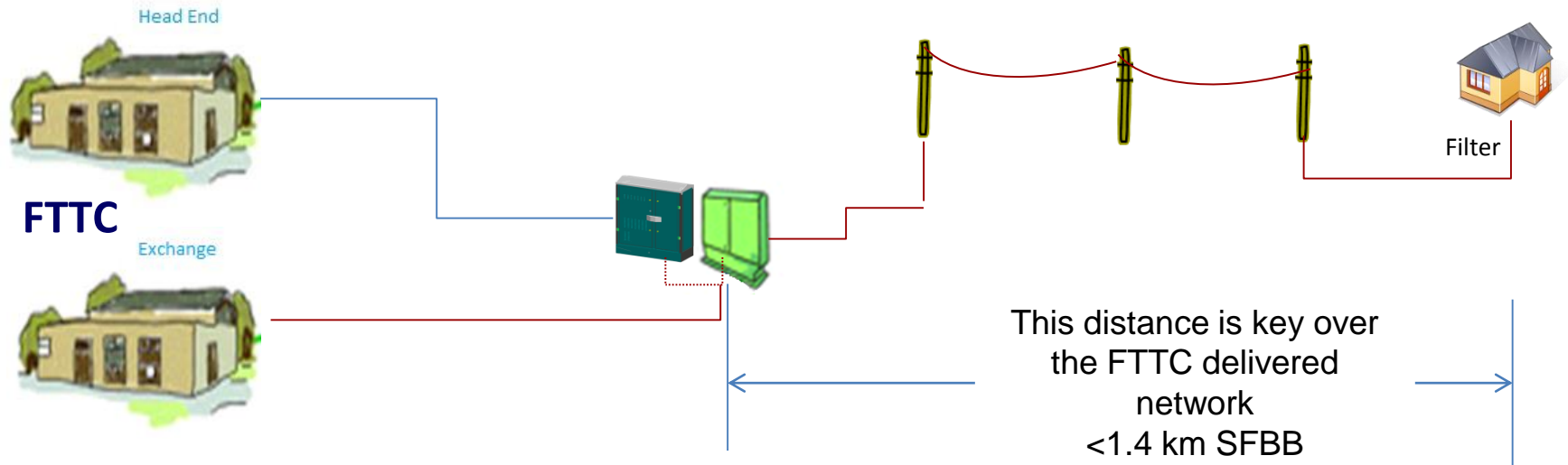


# Wem Rural Parish

Wem Rural Parish – 702 Premises served by 5 Exchange Areas



# Question – What's difference in FTTC and FTTP – What about voice and data?



# Wem Rural Parish

## Phase 1 Build Projections for structures serving the Parish

Exchange	Cabinet	Parish premises	Information
WEM	1	93	Q1 15/16
WEM	3	87	Q1 15/16
WEM	4	50	Q1 15/16
WEM	5	58	FTTC / CURE still in planning
WEM	6	1	Still in planning
WEM	7	44	Q1 15/16
WEM	8	121	Q1 15/16
WEM	12	4	Q1 15/16
WEM	EO	29	EO ONLY LINES - still in planning

# Wem Rural Parish

## Phase 1 Build Projections for structures serving the Parish

Exchange	Cabinet	Parish premises	Information
BETTISFIELD	2	134	BDUK+ 16/17 Still in Planning
WHIXALL	1	17	LIVE
WHIXALL	3	32	Q1 15/16
PREES	3	20	Prees 3 (Industrial site) NO BUILD – 176 thp
PREES	5	9	Still in planning
Clive	PE3	3	Q1 15/16



# Connecting Shropshire – Voucher Scheme

## Extension of Government Scheme

- Government (BDUK) extended city voucher scheme from 22 cities to 50 in spring budget.
- Shropshire have campaigned for some time for inclusion in the scheme that will allow qualifying SME's to obtain a voucher towards a Next Generation Access (NGA) solution (30Mbps) or a business grade solution.
- All SME's in the whole of Shropshire Council's geography will be eligible for a voucher of upto £3k
- The Voucher Scheme will allow businesses to aggregate vouchers for a collective solution in a specific area from a selected and approved provider.
- The Scheme has no State Aid implication and will not preclude any business from getting a solution as part of the on going Connecting Shropshire programme roll out (Phase 1, 2 and beyond).
- By limiting the voucher value to a maximum of £3,000 and making a condition of its granting that the receiving SME has to spend it in the open retail market (thereby preventing one supplier from gaining an unfair advantage through the availability of state funds) the money could be disbursed under the rule known as 'de Minimis' and therefore not subject to state aid rules
- Farming businesses can qualify for a voucher but are subject to additional checks on other state subsidy they may have received.
- Local Shropshire Wireless and Fixed wire providers have been invited to be added to a select supplier list that is managed by BDUK. Suppliers need to apply and prove they can supply the service to the required qualifying specification.
- The scheme will be administered by Digital Birmingham (DB), part of Birmingham City Council
- There is no financial risk to Shropshire Council. The scheme, receipts and payments will be managed by DB who receive an administration fee from BDUK.



# Connecting Shropshire – Voucher Scheme

## Project Timeline and dependencies

- March – Supplier warming
- April – Scheme Live
- End of April – formalised process and definition of Stakeholders roles and responsibilities.
- Post Election – Shropshire launch to announce availability of scheme – signposting via website to DB. Shropshire will not have resources to manage queries.
- Post Election – supplier engagement and briefing (with or without Marches LEP partners)
- June – combined PR Event with wider Midlands area to publicise scheme and opportunities

# Questions Summary

1. Using a map of Wem Rural Parish (which I can provide if required) can you mark on the map the location of each of the cabinets that will have FTTC installed and then from each cabinet provide a cascading radius to show the broadband speed
2. In respect to 1 above it would also be useful to see if any cabinets outside Wem Town or Wem Rural (i.e Whixall Parish) are going to provide meaningful broadband cover to our parishioners.
3. On the Connecting Shropshire website you do state that you are “looking at all methods which will enable you to provide improved broadband to all parts of the Shrophshire Council area”.
4. What alternative technologies (Satellite, Wi-Fi, other) do you have at your disposal;
5. Are these alternative technologies tested and deployed in other locations in the UK;
6. If the Wem Rural community joined together to form a co-operative would you be able to put more funds aside to deliver a meaningful solution for the whole parish. If this is the case what sort of numbers of committed households would BT need to see before adding further investment into a specific area;
7. With sufficient commitment from parishioners is it possible that further new fibre cabinets could be installed within Wem Rural Parish so that the broadband signal is improved. (i.e new cabinets in Newtown, Tilley, Edstaston, Osage Lane etc)
8. Are you aware of any additional BDUK or other grant funding source which is available for communities like ours to apply for additional funding to support to roll out of improved broadband;
9. Finally, can you let us know on what basis the order of the broadband upgrade was made.

- Wem Telephone Exchange area = 97% fibre coverage (Prees = 84%, Bettisfield 87%)
- Interim commercial solutions:
  - Satellite service - £20 for 10Mbps (install costs £350)
  - Wireless Service - £30
  - Voucher Scheme - £100 >< £3000
- Infill – <2 Mbps
  - By end of Phase 1 – Potentially end of 2015
  - Superfast satellite
- Phase 2
  - In Procurement
  - Phase 2 will commence after Phase 1 (Winter 2016)
- Phase 2b post phase 2



# What is Optimising Business Broadband

## What is it?

- It's a European funded project covering running until June 2015

## Project aim?

- The project aims to demonstrate to businesses the business benefits of using fibre broadband
- There are 4 levels of support:
  - Raising awareness
  - Practical Learning
  - Face-Face support
  - Follow-up and specialist training

## How do I find out more?

- Follow this link [www.optimisingbusinessbroadband.co.uk/home](http://www.optimisingbusinessbroadband.co.uk/home) to find out more and to book a place.



## Check with your ISP

- Take up the benefits:
  - For the HOME
  - For the BUSINESS
  - For the PROGRAMME



# Fibre Broadband is here

Check availability with your internet service provider



[www.connectingshropshire.co.uk](http://www.connectingshropshire.co.uk)



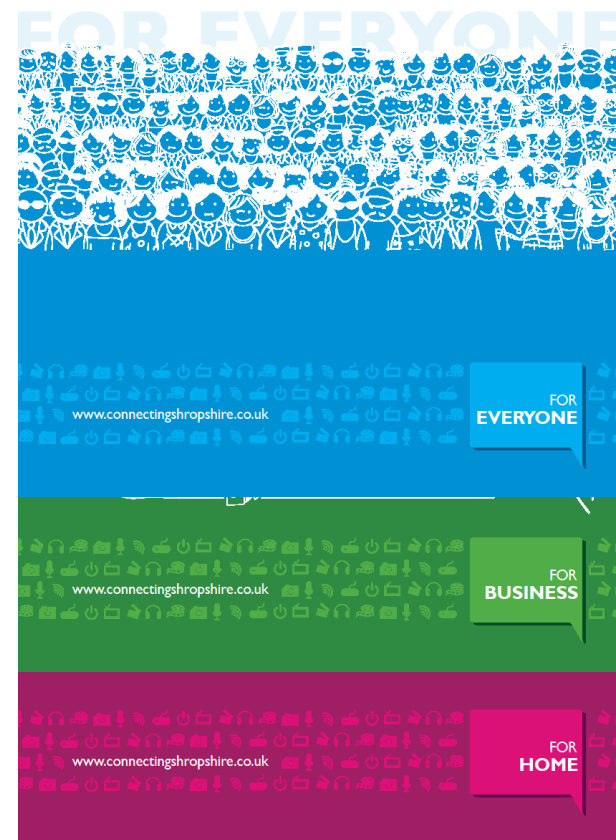
**SUPERFAST  
BRITAIN**



## BUILDING A BROADBAND FUTURE

Connecting Shropshire is an exciting new programme bringing fibre based broadband to areas where it isn't economically viable for commercial companies to provide broadband. Shropshire Council, in partnership with BT, are working together to build a faster broadband network in and around Shropshire. This will provide businesses and residents access to super fast broadband services from a range of Internet Service Providers.

ENABLED CONNECTED INFORMED INCLUDED



building a broadband future for everyone