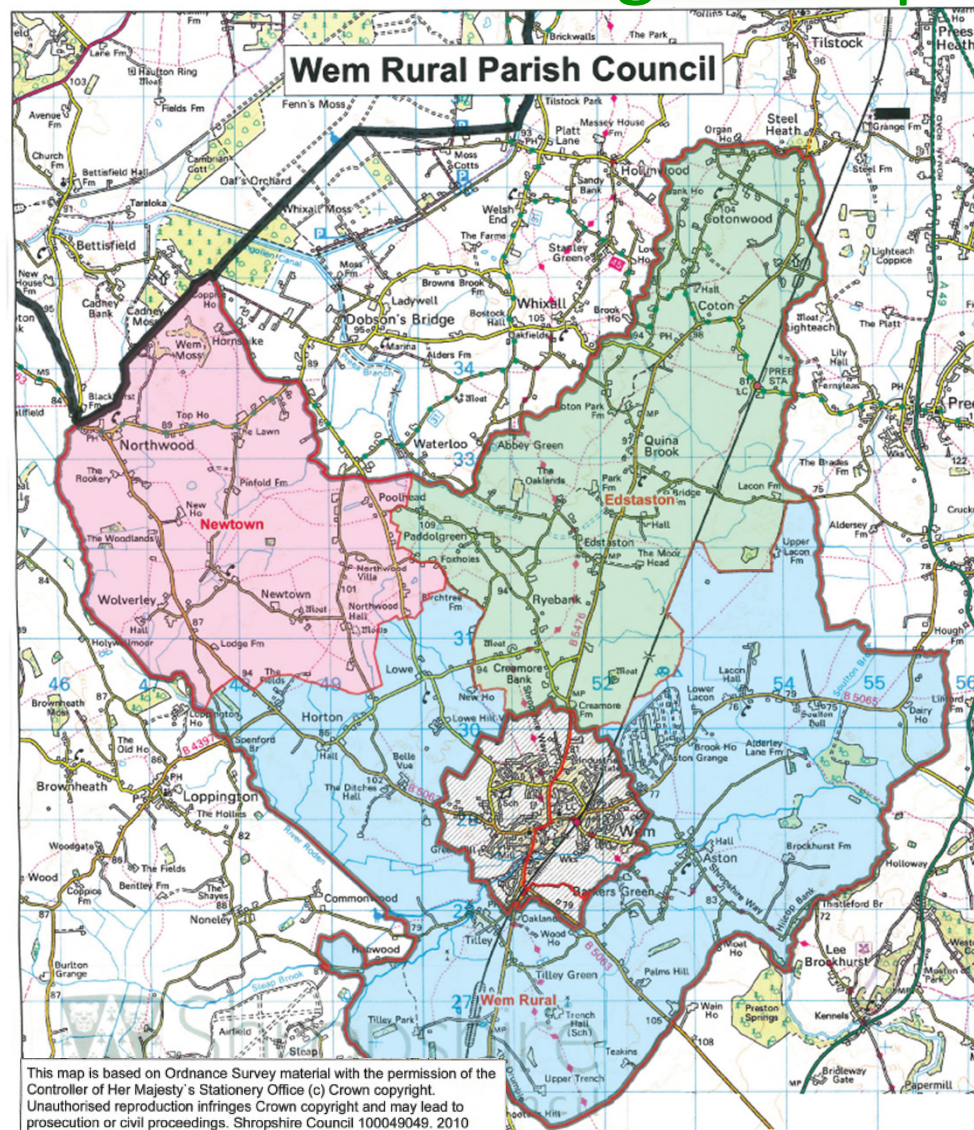


# Wem Rural Parish Council

## Annual Parish Meeting – 19 April 2016





# Agenda

Welcome

Minutes of the Annual Parish Meeting held on  
the 21 April 2015

Annual Report of the Parish Council

West Mercia Safer Roads Partnership

Future Development in the Parish

Broadband in the Parish

Parish Debate




# Annual Report of the Parish Council

Cllr Tim Wilton-Morgan



# Annual Report

- Round Meadow
  - Parish Plan Actions
    - Communication
    - Speeding
    - Broadband
  - New Ward Name
  - Councillor Vacancies and Elections 2017
  - Queen's 90<sup>th</sup> Birthday Celebrations
- 



# Future Development in the Parish

Clerk Carole Warner

# Background

- Consultation by Shropshire Council 2008 onwards.
- Wem Rural Parish Council approach considered between 2009 and 2012.
- Wem Rural Parish Council Future Development Document adopted October 2012.
- Parish considered as 'Countryside' under Planning Policies.

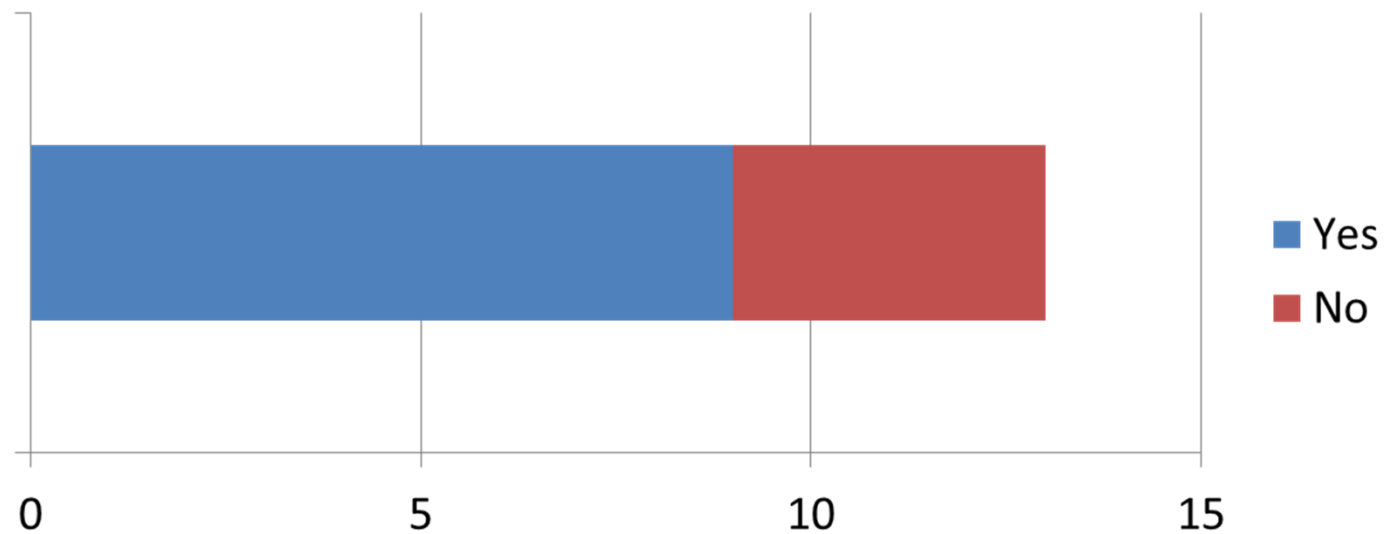
# Review of Document

- Decision made to review 'Countryside' Autumn 2014.
- Process guidance received from Shropshire Council.
- Future Development Document sent out as Parish Consultation June 2015.
- 15 responses received by deadline (2 by general comments).



# Question 1

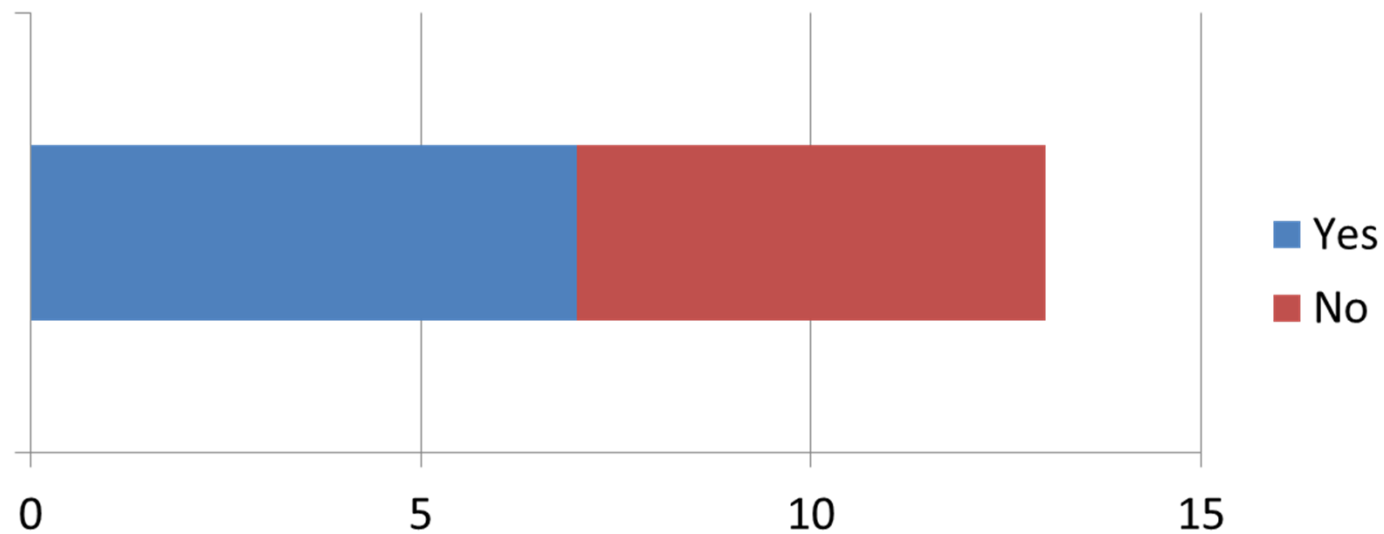
Do you agree with the principle of open market development in the Parish?





## Question 2

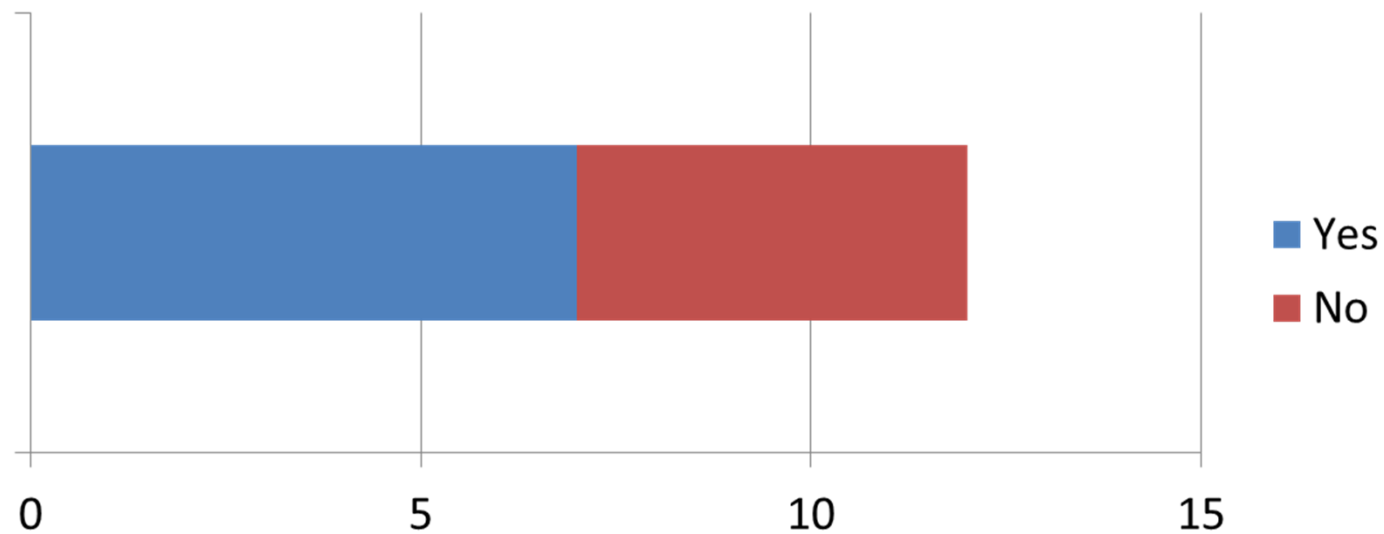
Do you agree with the target number of 30 open market houses up to 2016?



# Question 3

Do you agree with the hamlets identified?

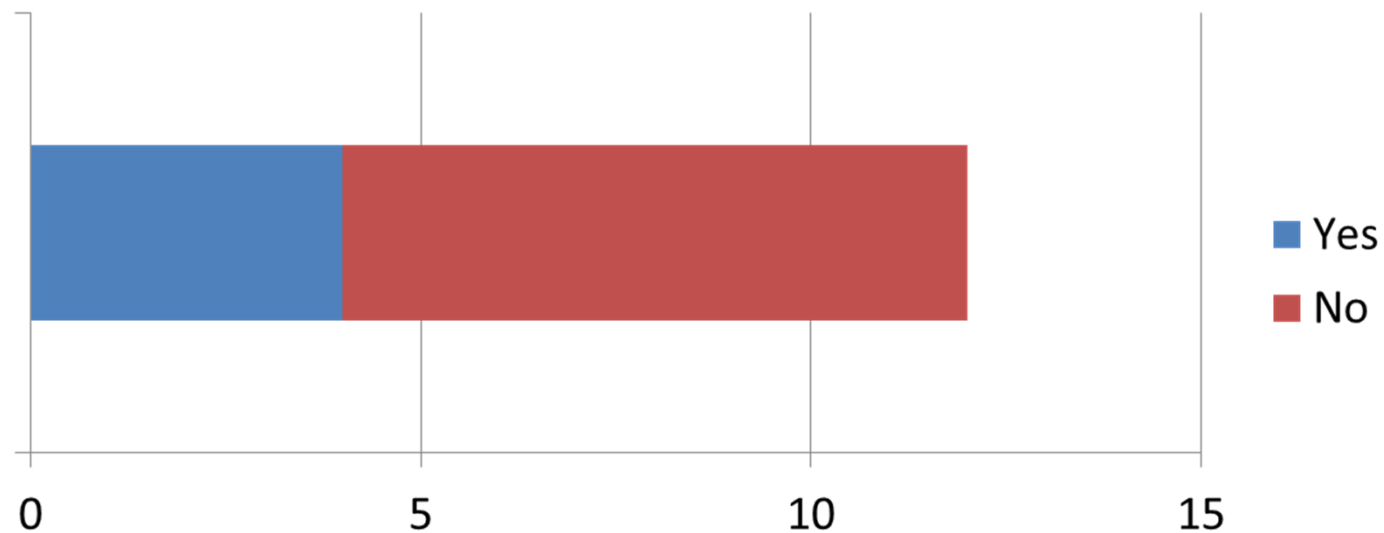
One respondent skipped this question



## Question 4

Are there others you would like WRPC to consider?

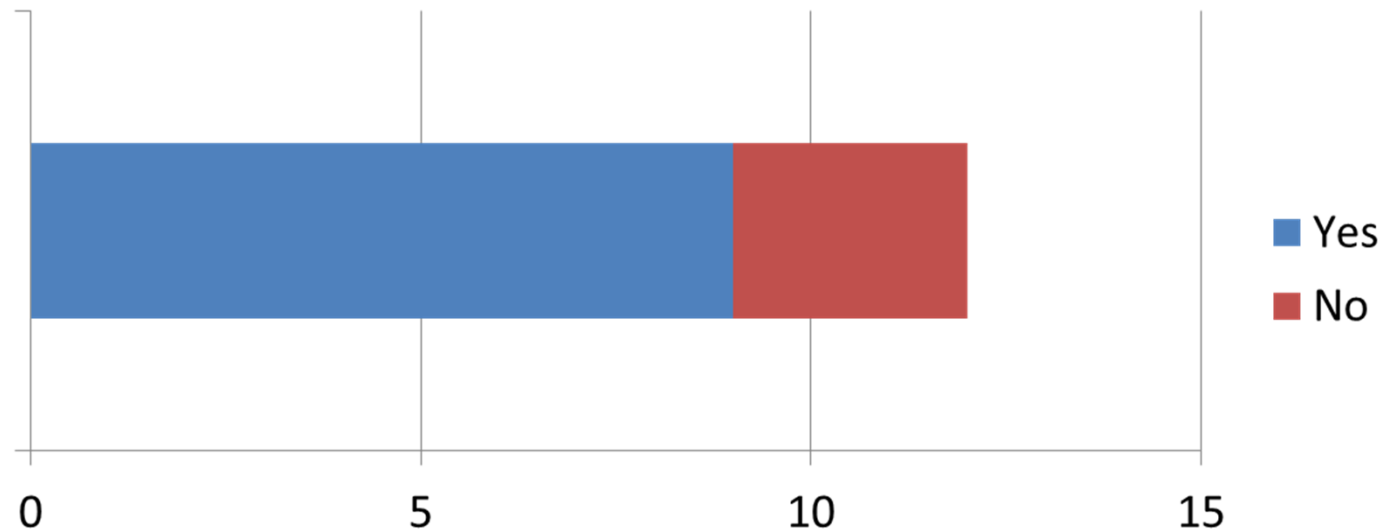
One respondent skipped this question



# Question 5

Do you agree with the statements under  
'Developing the community'?

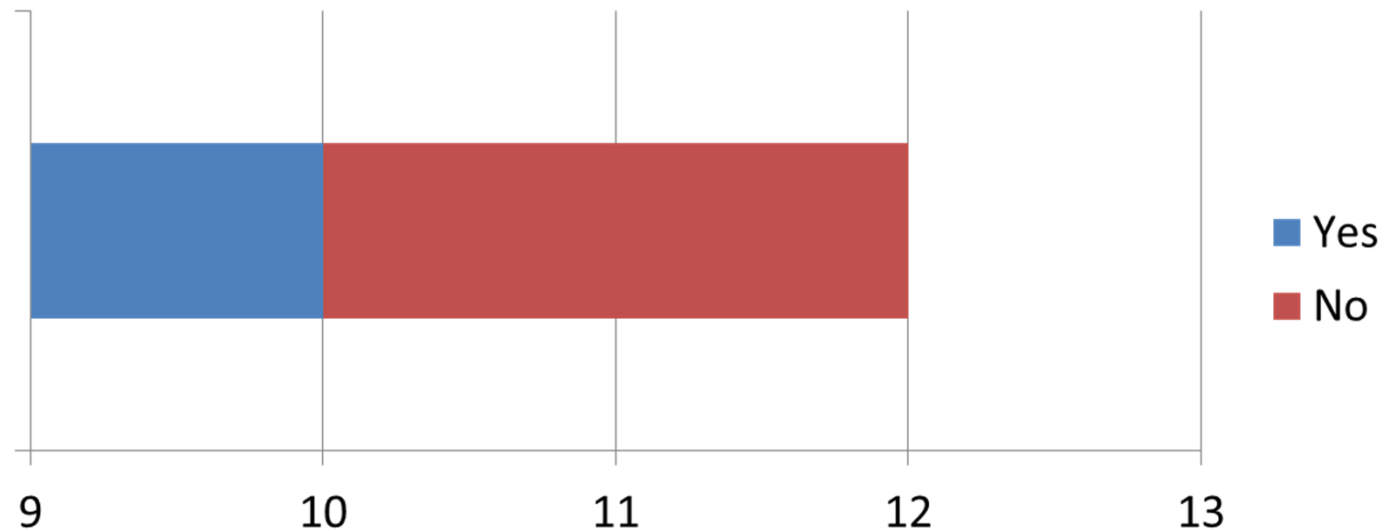
One respondent skipped this question



## Question 6

Do you agree with the statements under  
'Summary of Development Principles'?

One respondent skipped this question



# Question 7

## General Comments

# What next?

- Inspector withdrew opt-in process from final SAMDev Policies.
- Wem Rural Parish remains 'Countryside'.
- Shropshire Council to start Local Plan Review 2016 – 2036 this year.
- Further consultation methods to be considered at the appropriate time





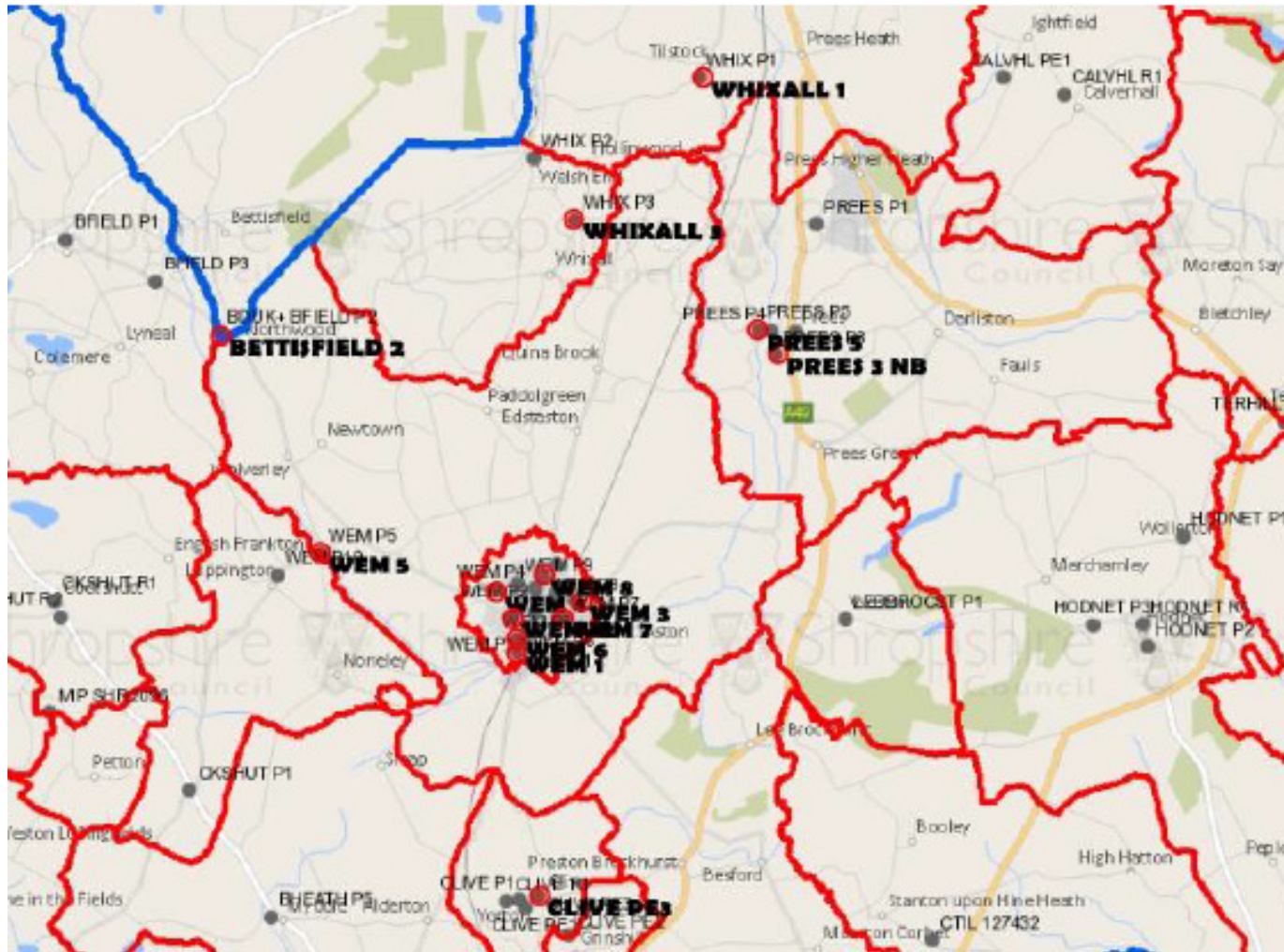
# Broadband in the Parish

Cllr Jon Murgatroyd

# Broadband is here! – I don't think so!



# Broadband – The issue for Wem Rural





# Broadband – What have we been doing?

- Talked with a number of third party suppliers of broadband who deliver their service using Wireless Technologies.
  - At this stage we have established a wireless solution in not viable
- In conjunction with Connecting Shropshire a number of councillors between November and January ran a trial of a Satellite broadband provision.
  - The trial proved unsuccessful and satellite provision is also not viable
- Met with Connecting Shropshire and BT Openreach to discuss options to extend the current fibre provision in Wem further into Wem Rural Parish
  - If we can prove a demand we are hoping to identify a trial area within the parish and work with BT Openreach to extend fibre into the trial area
- Connecting Shropshire are investigating other delivery partners and technologies for those areas of the county that are unlikely to be served adequately by the fibre broadband roll out
  - We will continue to work with Connecting Shropshire and evaluate the options for Wem Rural Parish

# Broadband – How can you help?

- Help us to make fellow parishioners aware of the current position regarding broadband and how they can help.
- If you are dissatisfied with your current broadband provision, irrespective of your supplier, then provide the following information via the Parish Council
  - Your home landline telephone number\*
  - Your address\*
  - Your postcode\*

**\* All information will be strictly confidential and only shared with BT (Openreach) to help us highlight the dissatisfaction**



# THANK YOU



# Parish Debate

Your opportunity to raise questions  
and  
matters of interest or concern  
regarding the Parish.





# Thank you

# Wem Rural Parish Council – Contact Points

Parish Clerk - Carole Warner

Address - Orchard Cottage, Rowe Lane, Welshampton, SY12 0QB

Telephone - 01948 710672

Email - [clerk@wemrural-pc.gov.uk](mailto:clerk@wemrural-pc.gov.uk)

<u>Ward</u>	<u>Councillor</u>	<u>Telephone</u>
<b>Edstaston</b>	Vacancy	
	Jon Murgatroyd	01939 234384
	Vacancy	
	Pete Slack	01939 236990
<b>Newtown</b>	Liz Vernon	01939 234896
	Trevor Hayward	01939 233400
	Geoff Glover	01939 233357
<b>Wem</b>	Peter Broomhall	01939 232573
	Fiona Ford	01939 234358
	Peter Marsh	01939 232498
	Len Staines (Vice Chair)	01939 234415
	Tim Wilton-Morgan (Chair)	01939 235703