



# Rural Review

The Newsletter of Wem Rural Parish Council  
Issue 6 September 2012

## In this Issue

WELCOME

PALMS HILL  
SAFETY CAMPAIGN

NEW PARISH  
COUNCILLOR

NEW NOTICEBOARDS

WEM AND  
SURROUNDING  
AREAS PLACE PLAN

PARISH MEETING

DIAMOND JUBILEE  
CELEBRATIONS  
THANK YOU

FUTURE  
DEVELOPMENT

COMMUNITY PLAN

BOGUS CALLERS

MESSAGING SERVICE

FOCUS ON TILLEY

## Rural Review

is produced by  
Wem Rural Parish Council  
Orchard Cottage  
Rowe Lane  
Welshampton  
SY12 0QB

For further  
information  
please contact  
Carole Warner on  
01948 710672  
email:  
wemruralpc@hotmail.co.uk  
www.wemrural.org.uk

## WELCOME...

to the sixth newsletter for the Wem Rural Community and my first as Chairman of the Parish Council. My first comment, on behalf of all the Parish, must be to thank Cllr Richard Powell, Chairman for the last two years, for guiding the Parish Council through an important transitional period. The Council also has a new Vice Chairman, Cllr Tim Wilton-Morgan. Both Tim and myself look forward to our term of office.

This edition of the Rural Review is again full of local news, information and, importantly, progress of the Community Plan. I hope you will find it all of interest.

**Peter Broomhall**

**Chairman Wem Rural Parish Council**

## PALMS HILL SAFETY CAMPAIGN

Wem Rural Parish Council, backed by Shropshire Council, the Local Policing Team, West Mercia Safer Roads Partnership and the Wem NFU, has launched a safety campaign aimed at drivers using the B5063 at Palms Hill.

Cllr Wilton-Morgan, Vice Chair of Wem Rural Parish Council explained, "The Parish Council has received numerous comments from local residents saying how dangerous this stretch of road is and the Council shares that opinion. Shropshire Council has now increased the number of warning signs at the approaches and will remove the centre white line from the narrow section to make drivers aware of the hazards. To re-enforce the changes we are asking local businesses which have regular contact with drivers to display posters reminding everyone to take extra care when approaching Palms Hill."

As the garage closest to Palms Hill Robinson and Young was the ideal place to launch the campaign and our thanks goes to Ben Young for his support."



## PALMS HILL

### PLEASE SLOW DOWN

A number of concerns have been raised by local residents and Wem Rural Parish Council about the safety of the B5063 road at Palms Hill.

This stretch of road is very narrow at certain points and is used by a range of traffic including HGVs and wide agricultural vehicles.

New warning signs will be put up at the approaches to Palms Hill and the centre white line will be removed from the narrow section to alert motorists that the road narrows from both sides and oncoming vehicles may be in the centre of the road.

**Please help by reducing your speed along this route and driving with extreme care.**

For more information, please contact Wem Rural Local Policing Team on 0300 333 3000. For further road safety advice, visit the Safer Roads Partnership website [www.srpwestmercia.org.uk](http://www.srpwestmercia.org.uk)



# PARISH ROUNDUP

## WELCOME TO OUR NEW COUNCILLOR

Wem Rural Parish Council welcomed a new Councillor, Mrs Moya Walker, at its meeting on Tuesday 7 August. Councillor Walker was co-opted onto the Parish Council following the resignation of Laura McMahon who has moved out of the area with her family.

Councillor Walker moved to Coton following her retirement as Head of a Science Department at Wirral Grammar School for Boys and has since been actively involved in the local community including Age Concern, Meals on Wheels and Whixall WI. She also has experience of local government having served as a Councillor on North Shropshire District Council for two years prior to the formation of

Shropshire Unitary Council. Mrs Walker said "I have always enjoyed the rural environment and the strong sense of community found there. I believe in serving my community and look forward to making a contribution to the Parish Council and its residents."

Chair of Wem Rural Parish Council, Peter Broomhall, said "Two high calibre candidates put themselves forward for the vacant position. Councillor Walker will be representing the Edstaston Ward of the Parish which includes Ryebank, Poolhead, Quina Brook and Coton. On behalf of the Council, I would like to thank Laura McMahon for her commitment and dedication to Wem Rural Parish Council and look forward to working with Councillor Walker."

### NEW NOTICE BOARDS AT COTON OAKS AND WEM LIBRARY

One of the Parish Council's priorities is to keep improving communications with its parishioners. Following the success of the new notice board in Tilley Village we have been working with Shropshire Council and West Mercia Probation Trust (under the Community Payback Scheme) and are delighted to announce that we now have a new notice board at Coton Oaks. As well as information about Parish Council activities, residents are encouraged to use the notice board for community events.

You may have already have noticed our new notice board outside Wem Library which will keep you up to date with Parish Council meeting dates and other information.

### WEM AND SURROUNDING AREAS PLACE PLAN

**"Wem will have development to strengthen its economic role, to support and enhance its important community assets and to maintain its role as a sustainable place."**

To achieve this vision for Wem and its surrounding areas the **Wem Place Plan** was created to identify priorities for investment and infrastructure within our local area. (A copy of the existing Place Plan can be found on our website [www.wemrural.org](http://www.wemrural.org)).

Wem Rural Parish Council is currently updating their entry in this important Place Plan (for submission by the end of December 2012). To ensure that local needs, priorities and aspirations are met they are asking parishioners to get involved either by sharing their views with the Parish Council or by working with a Place Plan Task Group.

Please contact the Clerk as soon as possible to express an interest, to share your ideas or for further information.

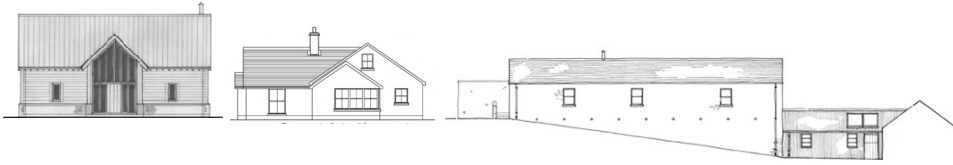
### Annual Parish Meeting

At Wem Rural's Annual Parish Meeting in May this year there were presentations on the Wem Rural Community Plan, Future Development in the Parish (see following article), Severn Trent works in the Parish, the role of a Parish Councillor and plans for the Queen's Diamond Jubilee celebrations.

Copies of the main points from these presentations along with the draft minutes are available on the Parish Council website [www.wemrural.org](http://www.wemrural.org).



**A big thank you**  
to all who helped with the  
Queen's Diamond Jubilee  
Celebrations in Wem. The  
event was a tremendous  
success and the closing  
fireworks could be seen and  
heard for miles around!



## Future Development in Wem Rural Parish

After long discussions based on evidence from the Community Plan questionnaires and views put forward by residents who attended the Annual Parish Meeting the Parish Council has confirmed its preferred option that Wem Rural Parish should be classed as "Countryside".

Planning Policy this classification means no open market new build development will be allowed in the parish. Barn conversions, where appropriate and with proper planning applications will still be considered. Affordable housing together with essential agricultural worker's houses will also be allowed where they meet strict criteria.

Under Shropshire Council's

## COMMUNITY PLAN

Firstly a huge 'thank you' to all those within the parish who took the time to complete and return the Community Plan questionnaires.

I hope that this will be the last update relating to the creation of a Community Plan for Wem Rural Parish. The Steering Group has worked hard over the last few months formatting and analysing all the data gathered from the responses we received to the Business, Adult and Children's questionnaires and is now in the process of collating all the information into the Wem Rural Community Plan.

We aim to have a draft version of the Parish Plan available by the end of October with the final version published by the end of 2012. Please keep an eye out on the Community Plan website [www.wemrural.org](http://www.wemrural.org).

## FOCUS ON...Tilley

Tilley is a small village to the south of Wem. A hamlet, Tilley Green, lies to its southeast. The village comprises around 20 dwellings and of these up to 10 are designated listed buildings including Tilley Manor, Tilley Farm and Brook Cottage; all three are timber-framed and have their origins in the medieval and early post-medieval periods; Tilley Farm and Manor are of the classic cross-wing vernacular and clearly very early in date, probably 13th/14th century.



There are lovely walks around Tilley—the Tilley lollipop from Wem Co-op, along the River Roden and back through Tilley, or a longer walk (The Tilley Turnaround) which takes the same route then crosses the railway line at the end of Tilley Village and continues to Barkers Green and back to Wem. For a map see [www.shropshirewalking.co.uk/downloads/north-shropshire-wem-independent-walking-v4.pdf](http://www.shropshirewalking.co.uk/downloads/north-shropshire-wem-independent-walking-v4.pdf). You could even stop for lunch at The Tilley Raven [www.tilleyraven.com](http://www.tilleyraven.com) or telephone 01939 234419.

## BOGUS CALLERS

Local newspapers have reported several incidents of bogus callers claiming to be from the water board, electricity company and even the council. Shropshire Council Trading Standards has produced several leaflets giving advice on how to deal with callers and doorstep sellers. You can also get a sticker to attach to your door saying "No Cold Callers". Leaflets and stickers can be requested by calling 0345 678 9000.

If you feel threatened by an uninvited caller police advice is to phone 101 or in an emergency 999.

## SHROPSHIRE COMMUNITY MESSAGING

This FREE service offers local residents, neighbourhood watch coordinators, businesses, farms, schools and partnerships information and alerts about crimes, incidents and events in their local area.

Find more details at: [www.safer-shropshire.org](http://www.safer-shropshire.org) or phone Dave Riley on 01743 237499 for more information.



# Wem Rural Parish Council

[www.wemrural.org.uk](http://www.wemrural.org.uk)

## PARISH COUNCILLORS

There are 12 Councillors representing the 3 wards.

### EDSTASTON

Owen Darlington	01948 841306	The Gate House, Coton, Whitchurch SY13 3LN
Angela Neame	01939 235492	Spode Cottage, Quina Brook, Wem SY4 5RJ
Bryan Morgan	01948 880305	Home Farm, New Road, Coton SY13 3LR
Jon Murgatroyd	01939 234384	Grange Farm, Poolhead, Wem SY4 5QY
Moya Walker	01939 236716	Bank House, Back Lane, Coton, SY13 3LS

### NEWTOWN

Mark Lockett	01948 710218	The Lawns, Northwood, Wem SY4 5NP
Richard Powell	01939 233289	Horton Hall Farm, Horton, Wem SY4 5ND

### WEM

Peter Broomhall	01939 232573	3 Swains Close, Wem SY4 5NZ
Don Edwards	01939 233054	Sherfield, Ellesmere Road, Wem SY4 5TU
Bev Horsley	01939 232956	Ryebank Farmhouse, near Wem SY4 5RA
Len Staines	01939 234415	The Hawthorns, Barkers Green, Wem SY4 5JW
Tim Wilton-Morgan	01939 235703	Palms Hill House, Palms Hill, Wem SY4 5PQ

Councillors invite members of their ward to contact them to discuss any issues or matters of concern.

You can also contact the Parish Clerk, Carole Warner, Orchard Cottage, Rowe Lane, Welshampton, SY12 0QB 01948 710672 or email [wemruralpc@hotmail.co.uk](mailto:wemruralpc@hotmail.co.uk)

### SCHEDULED MEETINGS

Tuesday  
2 October 2012

Tuesday  
6 November 2012

Tuesday  
4 December 2012

Tuesday  
8 January 2013

Tuesday  
5 February 2013

## M E E T I N G S

Wem Rural Parish Council meetings are held at 7.30pm on the first Tuesday of the month in the Council Chamber, Edinburgh House, New Street, Wem. Occasionally there may be a guest speaker in which case the meeting will start at the earlier time of 7.15pm to allow time before public statements at 7.30pm.

The Parish Council also holds Planning Meetings to consider planning applications when the time stipulated for response to Shropshire Council (21 days) does not allow them to be held over to the monthly Council meeting.

Agendas for all meetings are available on the website and are placed on notice boards around the Parish at least 3 days before the meeting. A copy can also be found in the notice board outside Wem Library.

Members of the community are welcome to attend all meetings and there is time set by at the start to allow you to address the Council.

This newsletter can be made available in large print and audio tape. Please call 01948 710672 for further details.



This newsletter is printed on recycled paper. When you have finished with it please recycle.